



**Title:** Three Cornered  
Lace Shawl  
**Primary Maker:** European  
**Medium:** Lace



**Title:** Lace Collar with  
Long Ends  
**Primary Maker:** European  
**Medium:** Lace



**Title:** Lace Handkerchief  
**Primary Maker:** European  
**Medium:** Lace with linen  
center



**Title:** Lace Collar  
**Primary Maker:** European  
**Medium:** Lace



**Title:** Edging  
**Primary Maker:** European  
**Medium:** Lace



**Title:** Edging  
**Primary Maker:** European  
**Medium:** Lace



**Title:** Edging  
**Primary Maker:** European  
**Medium:** Lace



**Title:** Edging  
**Primary Maker:** European  
**Medium:** Lace



**Title:** Lace Neck Piece  
**Primary Maker:** European  
**Medium:** Lace



**Title:** Lace Handkerchief  
**Primary Maker:** European  
**Medium:** Lace with linen center



**Title:** Lace  
**Primary Maker:** European  
**Medium:** Lace



**Title:** Lace  
**Primary Maker:** European  
**Medium:** Lace



**Title:** Lace  
**Primary Maker:** European  
**Medium:** Lace



**Title:** Lace  
**Primary Maker:** European  
**Medium:** Lace



**Title:** Lace  
**Primary Maker:** European  
**Medium:** Lace



**Title:** Lace  
**Primary Maker:** European  
**Medium:** Lace



**Title:** Lace Collar  
**Primary Maker:** European  
**Medium:** Lace



**Title:** Lace for a Handkerchief  
**Primary Maker:** European  
**Medium:** Lace





**Title: Lace Collar**  
**Primary Maker:** European  
**Medium:** Lace



**Title: Cuff**  
**Primary Maker:** European  
**Medium:** Lace



**Title: Cuff**  
**Primary Maker:** European  
**Medium:** Lace



**Title: Lace Collar**  
**Primary Maker:** European  
**Medium:** Lace



**Title: Lace Collar**  
**Primary Maker:** European  
**Medium:** Lace



**Title: Wide Lace Collar**  
**Primary Maker:** European  
**Medium:** Lace



**Title: Lace Handkerchief**  
**Primary Maker:** European  
**Medium:** Lace with linen center



**Title: Lace Shawl Collar**  
**Primary Maker:** European  
**Medium:** Organdy, lace



**Title: Long Lace Neck Piece**  
**Primary Maker:** European  
**Medium:** Lace



**Title:** Three Cornered  
Lace Shawl  
**Primary Maker:** European  
**Medium:** Organdy, lace



**Title:** Lace with Mother-  
of-Pearl Ribs, in Box  
**Primary Maker:** European  
**Medium:** Lace, mother-of-  
pearl (nacre)



**Title:** Lace  
**Primary Maker:** Philippino  
**Medium:** Lace



**Title:** Lace  
**Primary Maker:** Philippino  
**Medium:** Lace



**Title:** Lace  
**Primary Maker:** Philippino  
**Medium:** Lace



**Title:** Lace  
**Primary Maker:** Philippino  
**Medium:** Lace



**Title:** Black Lace Veil  
**Date:** c. 1829  
**Primary Maker:** American  
**Medium:** Silk, lace



**Title:** Shawl  
**Primary Maker:** European  
**Medium:** Silk



**Title:** Lace Long Scarf  
**Primary Maker:** European  
**Medium:** Silk, lace



**Title:** Point Lace Edge of a Handkerchief  
**Date:** c. 1825  
**Primary Maker:** European  
**Medium:** Lace



**Title:** Point Lace Collar  
**Primary Maker:** European  
**Medium:** Lace



**Title:** Paisley Shawl  
**Date:** 1860-1870  
**Primary Maker:** Scottish  
**Medium:** Wool

**Title:** Table Cover  
**Primary Maker:** Italian



**Title:** Verdure Tapestry  
**Date:** 17th century  
**Primary Maker:** Flemish  
**Medium:** Tapestry



**Title:** Valenciennes Lace  
**Primary Maker:** European  
**Medium:** Lace



**Title:** Autumn Landscape  
**Date:** Early 20th century  
**Primary Maker:** French  
**Medium:** Colored cotton and silk yarn on silk, thread petit-point



**Title:** Priest's Robe  
**Date:** 19th century  
**Primary Maker:** Chinese  
**Medium:** Silk



**Title:** Woven Panel  
**Date:** early 20th century  
**Primary Maker:** Chinese  
**Medium:** Silk



**Title:** Garment  
**Primary Maker:** Chinese  
**Medium:** Silk



**Title:** Saddle Blanket  
**Date:** about 1860-1870  
**Primary Maker:** Diné (Navajo)  
**Medium:** Tapestry weave, natural wool warp, hand-spun and commercial wool



**Title:** Rug  
**Date:** 1915-1925  
**Primary Maker:** West African  
**Medium:** Wool



**Title:** Saddle Blanket  
**Date:** about 1880  
**Primary Maker:** Diné (Navajo)  
**Medium:** Tapestry weave, wool warp with probably hand-spun wool



**Title:** Blanket  
**Date:** about 1890-1895  
**Primary Maker:** Diné (Navajo)  
**Medium:** Wool



**Title:** Blanket  
**Date:** about 1860-1870  
**Primary Maker:** Diné (Navajo)  
**Medium:** Tapestry weave, commercial cotton warp and commercial wool



**Title:** Blanket  
**Date:** about 1860-1870  
**Primary Maker:** Diné (Navajo)  
**Medium:** Tapestry weave, hand-spun wool



**Title:** Rug  
**Date:** about 1900-1910  
**Primary Maker:** Diné (Navajo)  
**Medium:** Wool



**Title:** Garment adapted as a blanket or rug  
**Date:** about 1850-1865  
**Primary Maker:** Diné (Navajo)  
**Medium:** Wool





**Title:** Garment adapted as a blanket or rug  
**Date:** about 1850-1865  
**Primary Maker:** Diné (Navajo)  
**Medium:** Wool



**Title:** Blanket  
**Date:** second half 19th century  
**Primary Maker:** Diné (Navajo)  
**Medium:** Tapestry weave, probably hand-spun wool warp and domestic wool



**Title:** Blanket  
**Date:** second half 19th century  
**Primary Maker:** Diné (Navajo)  
**Medium:** Tapestry weave, domestic hand-spun wool warp, probably domestic wools



**Title:** Saddle Rug  
**Date:** about 1880-1890  
**Primary Maker:** Diné (Navajo)  
**Medium:** Wool



**Title:** Blanket  
**Date:** about 1840-1860  
**Primary Maker:** Diné (Navajo)  
**Medium:** Wool



**Title:** Blanket  
**Date:** about 1840-1860  
**Primary Maker:** Diné (Navajo)  
**Medium:** Wool, cotton



**Title:** Saddle Blanket  
**Date:** about 1840-1860  
**Primary Maker:** Diné (Navajo)  
**Medium:** Wool, cotton



**Title:** Saddle Throw  
**Date:** about 1890-1895  
**Primary Maker:** Diné (Navajo)  
**Medium:** Wool, cotton

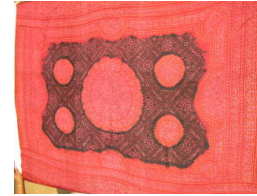


**Title:** Serape  
**Date:** late 19th century  
**Primary Maker:** Mexican  
**Medium:** Wool

**Title: Rug**  
**Date:** 1920s  
**Primary Maker:** Mexican  
**Medium:** Wool



**Title: Short Coat**  
**Date:** late 19th century  
**Primary Maker:** Chinese  
**Medium:** Silk



**Title: Odhni**  
**Date:** early 20th century  
**Primary Maker:** Indian  
**Medium:** Silk

**Title: Textile**  
**Primary Maker:** Indian  
**Medium:** Silk



**Title: Sari**  
**Date:** mid 18th century  
**Primary Maker:** Indian  
**Medium:** Silk

**Title: Man's Coat**  
**Primary Maker:** Chinese



**Title: Wall Panel**  
**Depicting a Procession**  
**Date:** c. 1920-30  
**Primary Maker:** Javanese  
**Medium:** Batik



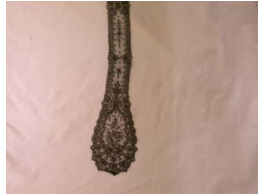
**Title: Batik Wall**  
**Hanging**  
**Date:** c. 1920  
**Primary Maker:** Javanese  
**Medium:** Batik on cotton



**Title: Sarong**  
**Primary Maker:** Javanese  
**Medium:** Batik on cotton



**Title:** Shawl  
**Date:** 1860-1870  
**Primary Maker:** Indian  
**Medium:** Wool



**Title:** Barb  
**Date:** c. 1855  
**Primary Maker:** European  
**Medium:** Lace



**Title:** Barb  
**Date:** c. 1850  
**Primary Maker:** European  
**Medium:** Chantilly Lace



**Title:** Shawl  
**Date:** c. 1855  
**Primary Maker:** European  
**Medium:** Chantilly Lace



**Title:** Shawl  
**Date:** c. 1855  
**Primary Maker:** European  
**Medium:** Cashmere wool



**Title:** Scarf  
**Date:** c. 1830  
**Primary Maker:** Spanish  
**Medium:** Lace



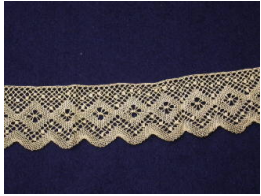
**Title:** Thread Lace  
**Date:** 19th century  
**Primary Maker:** European  
**Medium:** Silk



**Title:** Black Cluny Lace  
**Date:** c. 1855  
**Primary Maker:** European  
**Medium:** Lace



**Title:** Phulkari  
**Date:** late 19th - early 20th century  
**Primary Maker:** Indian  
**Medium:** Cotton, silk floss embroidery



**Title:** Torchon Lace  
**Primary Maker:** European  
**Medium:** Textile



**Title:** Batik Wall Hanging  
**Primary Maker:** Indonesian  
**Medium:** Cotton



**Title:** Sarong  
**Date:** early 20th century  
**Primary Maker:** Thai  
**Medium:** Silk



**Title:** Tablecloth  
**Primary Maker:** European  
**Medium:** Lace, linen



**Title:** Brocaded Textile  
**Date:** 18th century  
**Primary Maker:** Turkish  
**Medium:** Silk



**Title:** Peace Flag  
**Date:** 1933  
**Primary Maker:** American Flag Company, Inc.  
**Medium:** Wool



**Title:** Peace Flag  
**Date:** 1933  
**Primary Maker:** American Flag Company, Inc.  
**Medium:** Wool



**Title:** Shadow Work Scarf  
**Primary Maker:** French  
**Medium:** Silk georgette with brocaded silk pattern



**Title:** Handkerchief  
**Primary Maker:** English  
**Medium:** Linen





**Title:** Kinran  
**Date:** 19th century  
**Primary Maker:** Japanese  
**Medium:** Silk and paper



**Title:** Sarong  
**Primary Maker:** Javanese  
**Medium:** Batik on cotton



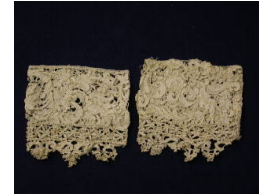
**Title:** Fragment of a coverlet  
**Date:** 1850  
**Primary Maker:** American  
**Medium:** Cotton



**Title:** Collar  
**Date:** 17th century  
**Primary Maker:** Italian  
**Medium:** Lace



**Title:** Cuff  
**Date:** 17th century  
**Primary Maker:** Italian  
**Medium:** Lace



**Title:** Cuff  
**Date:** 17th century  
**Primary Maker:** Italian  
**Medium:** Lace



**Title:** Tapestry fragment  
**Date:** 18th century  
**Primary Maker:** Peruvian  
**Medium:** Wool



**Title:** Shawl  
**Date:** c. 1860-1870  
**Primary Maker:** Indian  
**Medium:** Wool



**Title:** Shawl  
**Date:** mid 1850s  
**Primary Maker:** European  
**Medium:** Wool

**Title:** Shawl  
**Date:** mid 19th century  
**Primary Maker:** European  
**Medium:** Wool



**Title:** Skirt border  
**Date:** early 20th century  
**Primary Maker:** Indian  
**Medium:** Cotton, embroidery



**Title:** Skirt  
**Date:** early 20th century  
**Primary Maker:** Chinese  
**Medium:** Silk



**Title:** Fan  
**Date:** 1920-1925  
**Primary Maker:** French  
**Medium:** Cotton net



**Title:** Storage Box for Fan  
**Date:** 1920-1925  
**Primary Maker:** French  
**Medium:** Satin, cardboard



**Title:** Fan  
**Primary Maker:** French  
**Medium:** Lace, mother of pearl, ivory



**Title:** Fan  
**Date:** mid 19th century  
**Primary Maker:** French  
**Medium:** Silk



**Title:** Fan  
**Date:** 1860  
**Primary Maker:** French  
**Medium:** Silk, sequins



**Title:** Box for Fan  
**Date:** 1860  
**Primary Maker:** French  
**Medium:** Silk, sequins



**Title:** Fan  
**Date:** 1830-1840  
**Primary Maker:** Portuguese  
**Medium:** Paper, ivory



**Title:** Fan  
**Primary Maker:** Portuguese  
**Medium:** Lace, tortoise shell



**Title:** Fan  
**Date:** 1860  
**Primary Maker:** American  
**Medium:** Silk



**Title:** Storage Box for a Fan  
**Date:** 1860  
**Primary Maker:** American  
**Medium:** Silk



**Title:** Collar or Shoulder Mantle, Russian Priest's Robe  
**Date:** 18th century  
**Primary Maker:** Russian Orthodox  
**Medium:** Velvet and gold thread



**Title:** Fan  
**Date:** mid 19th century  
**Primary Maker:** American  
**Medium:** Feathers, ivory



**Title:** Fan  
**Date:** 19th century  
**Primary Maker:** American  
**Medium:** Silk satin, mother-of-pearl



**Title:** Fan  
**Date:** mid 19th century  
**Primary Maker:** Chinese  
**Medium:** Paper



**Title:** Fan  
**Date:** 1878  
**Primary Maker:** American  
**Medium:** Paper



**Title:** Fan  
**Date:** early 19th century  
**Primary Maker:** Spanish  
**Medium:** Silk



**Title:** Fan  
**Date:** mid 1850s  
**Primary Maker:** Chinese  
**Medium:** Paper



**Title:** Fan  
**Date:** early 19th century  
**Primary Maker:** American  
**Medium:** Silk, ivory



**Title:** Fan  
**Date:** 19th century  
**Primary Maker:** French  
**Medium:** Silk, paper



**Title:** Fan  
**Date:** 1850-1860  
**Primary Maker:** Spanish  
**Medium:** Paper



**Title:** Fan  
**Date:** 19th century  
**Primary Maker:** French  
**Medium:** Paper



**Title:** Fan  
**Date:** 1830s  
**Primary Maker:** Italian  
**Medium:** Paper, bone



**Title:** Fan  
**Date:** mid 19th century  
**Primary Maker:** Italian  
**Medium:** Paper, ivory



**Title:** Fan  
**Date:** 1840-1850  
**Primary Maker:** French  
**Medium:** Paper





**Title:** Fan  
**Date:** 19th century  
**Primary Maker:** French  
**Medium:** Silk



**Title:** Fan  
**Date:** 19th century  
**Primary Maker:** American  
**Medium:** Paper, ivory



**Title:** Fan  
**Primary Maker:** French  
**Medium:** Lace



**Title:** Fan  
**Date:** late 19th century  
**Primary Maker:** Belgian  
**Medium:** Lace, ivory



**Title:** Fan  
**Date:** early 19th century  
**Primary Maker:** French  
**Medium:** Silk, sequins



**Title:** Fan  
**Date:** 1860-1865  
**Primary Maker:** Chinese  
**Medium:** Paper



**Title:** Fan  
**Date:** 1910-1920  
**Primary Maker:** French  
**Medium:** Silk



**Title:** Fan  
**Date:** 1860-1870  
**Primary Maker:** French  
**Medium:** Paper



**Title:** Fan  
**Date:** mid 1850s  
**Primary Maker:** Chinese  
**Medium:** Paper



**Title:** Fan  
**Date:** 1830s  
**Primary Maker:** French  
**Medium:** Paper



**Title:** Fan  
**Date:** 1870s  
**Primary Maker:** Spanish  
**Medium:** Paper



**Title:** Fan  
**Primary Maker:** French  
**Medium:** Paper



**Title:** Fan  
**Date:** late 19th century  
**Primary Maker:** French  
**Medium:** Silk



**Title:** Fan  
**Date:** 1890  
**Primary Maker:** French  
**Medium:** Silk



**Title:** Fan  
**Date:** 1820s  
**Primary Maker:** Chinese  
**Medium:** Ivory



**Title:** Fan  
**Date:** 1830-1835  
**Primary Maker:** Spanish  
**Medium:** Parchment paper



**Title:** Fan  
**Date:** 1820s  
**Primary Maker:** British  
**Medium:** Silk



**Title:** Fan  
**Date:** 1870-1880  
**Primary Maker:** French  
**Medium:** Parchment paper



**Title:** Fan  
**Date:** 19th century  
**Primary Maker:** French  
**Medium:** Silk



**Title:** Fan  
**Date:** early 19th century  
**Primary Maker:** Russian  
**Medium:** Silk



**Title:** Fan  
**Date:** 19th century  
**Primary Maker:** French  
**Medium:** Parchment paper



**Title:** Fan  
**Date:** 20th century  
**Primary Maker:** French  
**Medium:** Silk



**Title:** Fan  
**Date:** 1870s  
**Primary Maker:** American  
**Medium:** Silk



**Title:** Fan  
**Date:** mid 18th century  
**Primary Maker:** French  
**Medium:** Silk



**Title:** Fan  
**Date:** c. 1840  
**Primary Maker:** Spanish  
**Medium:** Paper



**Title:** Fan  
**Primary Maker:** Chinese  
**Medium:** Paper



**Title:** Fan  
**Date:** early 19th century  
**Primary Maker:** Spanish  
**Medium:** Paper



**Title:** Fan  
**Date:** 19th century  
**Primary Maker:** French  
**Medium:** Silk



**Title:** Fan  
**Date:** 1870-1880



**Title:** Fan  
**Date:** 1760s  
**Primary Maker:** Spanish  
**Medium:** Paper, ivory



**Title:** Tiriangular Lace  
Shawl of Brussels Net  
**Primary Maker:** Belgian  
**Medium:** Textile



**Title:** Fan  
**Date:** 1820s  
**Primary Maker:** Japanese  
**Medium:** Ivory



**Title:** Fan  
**Date:** about 1878  
**Primary Maker:** American  
**Medium:** Paper



**Title:** Coverlet  
**Date:** 1841  
**Primary Maker:** Peter  
Lorenz  
**Medium:** Wool, cotton



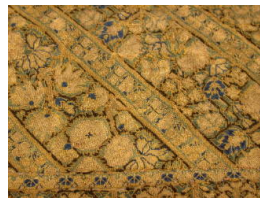
**Title:** Shawl  
**Date:** c. 1870  
**Primary Maker:** Indian  
**Medium:** Wool

**Title:** Brocade  
**Primary Maker:** Japanese  
**Medium:** panel





**Title:** Sarong  
**Date:** late 19th century  
**Primary Maker:** Cambodian  
**Medium:** Silk, ikat weave



**Title:** Embroidered panel  
**Date:** 19th century  
**Primary Maker:** Near Eastern  
**Medium:** Linen with silk floss embroidery



**Title:** Christ with Four Apostles  
**Date:** 16th century  
**Primary Maker:** Byzantine  
**Medium:** Linen, embroidery



**Title:** Kesi Tapestry:  
Spring  
**Primary Maker:** Chinese  
**Medium:** Silk tapestry weaving



**Title:** Kesi Tapestry:  
Autumn  
**Primary Maker:** Chinese  
**Medium:** Silk tapestry weave



**Title:** Scarf or neck cloth  
**Date:** Early 20th century  
**Primary Maker:** Javanese  
**Medium:** Batik on cotton



**Title:** Batik  
**Primary Maker:** Balinese  
**Medium:** Batik



**Title:** Selendang or  
Shoulder Cloth  
**Date:** Early 20th century  
**Primary Maker:** Javanese  
**Medium:** Batik on cotton



**Title:** Selendang or  
Shoulder Cloth  
**Date:** Early 20th century  
**Primary Maker:** Javanese  
**Medium:** Batik on cotton



**Title:** Batik  
**Primary Maker:** Balinese  
**Medium:** Batik on cotton



**Title:** Shoulder cloth  
**Date:** late 19th century  
**Primary Maker:** Cambodian  
**Medium:** Silk brocade with supplementary weft



**Title:** Shoulder cloth  
**Date:** late 19th century  
**Primary Maker:** Cambodian  
**Medium:** Silk brocade with supplementary weft



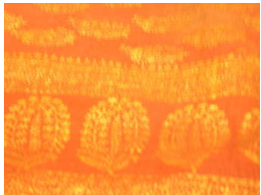
**Title:** Printed Cover (Palampore)  
**Date:** Early 18th century  
**Primary Maker:** Indian  
**Medium:** Printed and painted cotton



**Title:** Fabric  
**Date:** early 20th century  
**Primary Maker:** Indian  
**Medium:** Silk, cotton, metallic thread



**Title:** Patka  
**Primary Maker:** Indian  
**Medium:** Silk



**Title:** Shawl  
**Date:** early 20th century  
**Primary Maker:** Indian  
**Medium:** Cotton, gold stamp



**Title:** Head Scarf  
**Date:** Late 19th century  
**Primary Maker:** Indian  
**Medium:** Cotton, gold stamping



**Title:** Brocaded Textile  
**Date:** Late 18th century  
**Primary Maker:** Chinese  
**Medium:** Silk



**Title:** Brocade  
**Primary Maker:** Japanese  
**Medium:** Textile with floral patterns



**Title:** Shawl  
**Date:** 1930s  
**Primary Maker:** Uzbek  
**Medium:** Silk



**Title:** Sarong  
**Date:** early 20th century  
**Primary Maker:** Javanese  
**Medium:** Cotton, batik



**Title:** Shawl  
**Primary Maker:** Scottish  
**Medium:** Wool, cotton



**Title:** Shawl  
**Primary Maker:** French  
**Medium:** Lace



**Title:** Fan  
**Date:** 1860-1870  
**Primary Maker:** French  
**Medium:** Lace



**Title:** Shawl  
**Primary Maker:** French  
**Medium:** Lace



**Title:** Shawl  
**Date:** 19th century  
**Primary Maker:** Chinese  
**Medium:** Silk



**Title:** Lace  
**Primary Maker:** European  
**Medium:** Lace





**Title: Veil**  
**Primary Maker:** European  
**Medium:** Lace



**Title: Collar**  
**Primary Maker:** European  
**Medium:** Lace



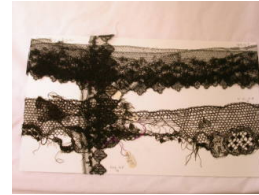
**Title: Lace**  
**Primary Maker:** European  
**Medium:** Lace



**Title: Lace**  
**Primary Maker:** European  
**Medium:** Lace



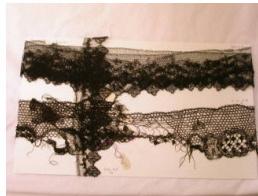
**Title: Lace**  
**Primary Maker:** European  
**Medium:** Lace



**Title: Lace**  
**Primary Maker:** European  
**Medium:** Lace



**Title: Lace**  
**Primary Maker:** European  
**Medium:** Lace



**Title: Lace**  
**Primary Maker:** European  
**Medium:** Lace



**Title: Lace**  
**Primary Maker:** European  
**Medium:** Lace

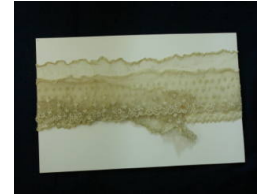




**Title:** Lace  
**Primary Maker:** European  
**Medium:** Lace



**Title:** Lace  
**Primary Maker:** European  
**Medium:** Lace



**Title:** Lace  
**Primary Maker:** European  
**Medium:** Lace



**Title:** Lace  
**Primary Maker:** European  
**Medium:** Lace



**Title:** Lace  
**Primary Maker:** European  
**Medium:** Linen



**Title:** Lace  
**Primary Maker:** European  
**Medium:** Lace



**Title:** Lace  
**Primary Maker:** European  
**Medium:** Lace



**Title:** Lace  
**Primary Maker:** European  
**Medium:** Lace



**Title:** Lace  
**Primary Maker:** European  
**Medium:** Lace



**Title:** Fan  
**Date:** 1850-1870  
**Primary Maker:** American  
**Medium:** Red cotton, wood



**Title:** Fan  
**Date:** mid 19th century



**Title:** Wall Hanging  
**Date:** 1736-1795  
**Primary Maker:** Chinese  
**Medium:** Silk



**Title:** Mandarin Robe  
**Date:** 1880-1900  
**Primary Maker:** Chinese  
**Medium:** Silk, metallic thread



**Title:** Taoist Robe  
**Date:** 19th century  
**Primary Maker:** Chinese  
**Medium:** Silk



**Title:** Crewel Work Tapestry  
**Date:** c. 1675  
**Primary Maker:** English  
**Medium:** Needlepoint, wool embroidery on linen or cotton



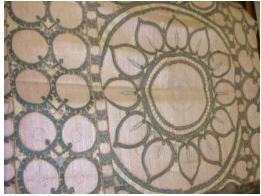
**Title:** Dragon Robe  
**Tanka Amitabha Buddha of Infinite Light**  
**Date:** 18th - 19th century?  
**Primary Maker:** Chinese  
**Medium:** Silk brocade



**Title:** The Meeting of Abraham and Melchizedek  
**Date:** 17th century  
**Primary Maker:** French



**Title:** Shawl  
**Date:** mid 19th century  
**Primary Maker:** Indian  
**Medium:** Wool



**Title:** Suzani  
**Primary Maker:** Uzbek  
**Medium:** Silk



**Title:** Panel  
**Date:** late 19th century  
**Primary Maker:** Uzbek  
**Medium:** Silk



**Title:** Benediction Veil  
**Date:** c. 1690-1700  
**Primary Maker:** Brussels  
**Medium:** Linen and bobbin lace



**Title:** Portion of Mummy Shirt or Grave Cloth, Ornamented with Patterns and Designs  
**Date:** 5th - 6th century?  
**Primary Maker:** Coptic  
**Medium:** Cotton?, linen?



**Title:** Portion of Mummy Shirt or Grave Cloth, Ornamented with Patterns and Designs  
**Date:** 5th - 6th century?  
**Primary Maker:** Coptic  
**Medium:** Cotton?, linen?



**Title:** Portion of Mummy Shirt or Grave Cloth, Ornamented with Patterns and Designs  
**Date:** 5th - 6th century?  
**Primary Maker:** Coptic  
**Medium:** Cotton?, linen?



**Title:** Portion of Mummy Shirt or Grave Cloth, Ornamented with Patterns and Designs  
**Date:** 5th - 6th century?  
**Primary Maker:** Coptic  
**Medium:** Cotton?, linen?



**Title:** Portion of Mummy Shirt or Grave Cloth, Ornamented with Patterns and Designs  
**Date:** 5th - 6th century?  
**Primary Maker:** Coptic  
**Medium:** Cotton?, linen?



**Title:** Portion of Mummy Shirt or Grave Cloth, Ornamented with Patterns and Designs  
**Date:** 4th - 5th century  
**Primary Maker:** Coptic  
**Medium:** Cotton?, linen?





**Title:** Portion of Mummy Shirt or Grave Cloth, Ornamented with Patterns and Designs

**Date:** 4th - 5th century

**Primary Maker:** Coptic

**Medium:** Cotton?, linen?



**Title:** Portion of Mummy Shirt or Grave Cloth, Ornamented with Patterns and Designs

**Date:** 4th - 5th century

**Primary Maker:** Coptic

**Medium:** Cotton?, linen?



**Title:** Portion of Mummy Shirt or Grave Cloth, Ornamented with Patterns and Designs

**Date:** 4th - 5th century

**Primary Maker:** Coptic

**Medium:** Cotton?, linen?



**Title:** Portion of Mummy Shirt or Grave Cloth, Ornamented with Patterns and Designs

**Date:** 4th - 5th century

**Primary Maker:** Coptic

**Medium:** Cotton?, linen?



**Title:** Choga

**Primary Maker:** Turkish

**Medium:** Velvet



**Title:** Book: History of Lace: Volume One. Ancient Points (Containing examples of Lace)

**Date:** 1925

**Primary Maker:** E. Schepens

**Medium:** Ink on paper manuscript, textile



**Title:** Book: History of Lace: Volume Two, Modern Work (Containing examples of Lace)

**Date:** 1926

**Primary Maker:** E. Schepens

**Medium:** Ink on paper manuscript, textile



**Title:** Handkerchief

**Date:** c. 1890

**Medium:** Embroidered Linen



**Title:** Darned Bobbinet

**Date:** 1889

**Medium:** Lace





**Title:** Lace: Brussels  
**Point Applique**  
**Primary Maker:** Flemish  
**Medium:** Lace



**Title:** Obi  
**Date:** Late 19th century  
**Primary Maker:** Japanese  
**Medium:** Silk



**Title:** Cowboy Hat Band  
**Date:** n.d.  
**Primary Maker:** American  
**Medium:** Horsehair and wool



**Title:** Woven Belt  
**Date:** n.d.  
**Primary Maker:** American



**Title:** Fan  
**Date:** 1870-1880  
**Medium:** Silk



**Title:** Fan  
**Date:** Mid 19th century  
**Primary Maker:** French  
**Medium:** Silk, lace



**Title:** Point Lace Cap  
**Date:** Before 1864  
**Primary Maker:** American  
**Medium:** lace



**Title:** Baby's Cap  
**Date:** Before 1947  
**Primary Maker:** American  
**Medium:** Linen



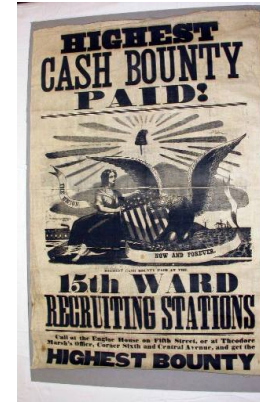
**Title:** Piece of lace  
**Medium:** Lace



**Title:** Piece of lace  
**Medium:** Lace



**Title:** Piece of lace  
**Medium:** Lace



**Title:** Civil War Bounty  
Poster from Cincinnati  
**Date:** 1861- 62  
**Primary Maker:** American  
**Medium:** Print on fabric



**Title:** Chasuble  
**Date:** 1760-1780  
**Primary Maker:** French  
**Medium:** Silk, linen, taffeta



**Title:** Coverlet  
**Date:** 1846  
**Primary Maker:** C. Boden  
**Medium:** Wool, cotton



**Title:** The Months of  
Lucas, March  
**Date:** 1650  
**Primary Maker:** Belgian  
**Medium:** Tapestry weave,  
wool and silk



**Title:** Allegory of Time  
Unveiling Beauty or  
Jupiter and Semele,  
Tapestry  
**Date:** Early 18th Century  
**Primary Maker:** Flemish  
**Medium:** Wool and silk,  
tapestry weave



**Title:** Strip of Woven  
Coverlet  
**Date:** 1839  
**Primary Maker:** H. Petry  
**Medium:** Wool, cotton



**Title:** Strip of Woven  
Coverlet  
**Primary Maker:** H. Petry  
**Medium:** Wool, cotton



**Title:** Abayah  
**Date:** early 20th century  
**Primary Maker:** Egyptian  
**Medium:** Silk

**Title:** Skirt  
**Date:** 1930s  
**Primary Maker:** Cambodian  
**Medium:** Silk



**Title:** Curtain  
**Date:** 19th century  
**Primary Maker:** Syrian  
**Medium:** Cotton, embroidery



**Title:** Shawl  
**Date:** mid 19th century  
**Primary Maker:** Syrian  
**Medium:** Cotton, silk floss



**Title:** Sari  
**Date:** early 20th century  
**Primary Maker:** Indian  
**Medium:** Cotton



**Title:** Shawl  
**Date:** 1940-1950s  
**Primary Maker:** Indian  
**Medium:** Cotton, rayon



**Title:** Shoulder Cloth  
**Date:** 1940-1950  
**Primary Maker:** Thai  
**Medium:** Cotton



**Title:** Sash  
**Date:** 20th century  
**Primary Maker:** Japanese  
**Medium:** Silk



**Title:** Sash  
**Date:** 20th century  
**Primary Maker:** Japanese  
**Medium:** Silk





**Title:** Brocaded textile  
**Date:** Late 19th century  
**Primary Maker:** Japanese  
**Medium:** Silk, metallic thread



**Title:** Fragment of Kimono  
**Date:** late 19th century  
**Primary Maker:** Japanese  
**Medium:** Silk



**Title:** Fragment of printed silk  
**Date:** 1940s  
**Primary Maker:** Japanese  
**Medium:** Silk crepe



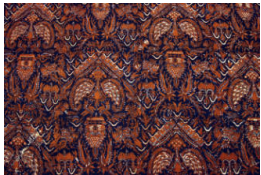
**Title:** Table cover  
**Date:** 20th century  
**Primary Maker:** Japanese  
**Medium:** Silk



**Title:** Fragment of Kimono cloth  
**Date:** 20th century  
**Primary Maker:** Japanese  
**Medium:** Silk



**Title:** Scarf  
**Date:** early 20th century  
**Primary Maker:** Indian  
**Medium:** Wool



**Title:** Kain Panjang  
**Date:** 1930-1940  
**Primary Maker:** Javanese  
**Medium:** Batik on cotton



**Title:** Headdress  
**Primary Maker:** Javanese  
**Medium:** Batik on cotton



**Title:** Headdress  
**Primary Maker:** Javanese  
**Medium:** Batik on cotton





**Title:** Sarong  
**Date:** 1940s  
**Primary Maker:** Javanese  
**Medium:** Cotton



**Title:** Sarong  
**Date:** 1950s  
**Primary Maker:** Indonesian  
**Medium:** Cotton



**Title:** Batik Wall Hanging  
**Date:** c. 1920-30  
**Primary Maker:** Javanese  
**Medium:** Batik on cotton



**Title:** Pair of Sleeve bands  
**Date:** late 19th century  
**Primary Maker:** Chinese  
**Medium:** Silk



**Title:** Kesi panel  
**Date:** 19th century  
**Primary Maker:** Chinese  
**Medium:** Silk



**Title:** Obi  
**Date:** 20th century  
**Primary Maker:** Japanese  
**Medium:** Silk



**Title:** Sash  
**Date:** 20th century  
**Primary Maker:** Japanese  
**Medium:** Silk



**Title:** Sash  
**Date:** 20th century  
**Primary Maker:** Japanese  
**Medium:** Cotton, silk



**Title:** Fragment of Obi cloth  
**Date:** late 19th century  
**Primary Maker:** Japanese  
**Medium:** Silk



**Title:** Long scarf  
**Date:** 1950s  
**Primary Maker:** Japanese  
**Medium:** Silk crepe



**Title:** Fragment of boy's kimono  
**Date:** early 20th century  
**Primary Maker:** Japanese  
**Medium:** Silk



**Title:** Obi fragment  
**Date:** 20th century  
**Primary Maker:** Japanese  
**Medium:** Silk



**Title:** Fragment of Kimono cloth  
**Date:** 1930s  
**Primary Maker:** Japanese  
**Medium:** Silk crepe



**Title:** Fragment of woman's kimono  
**Date:** 1930s  
**Primary Maker:** Japanese  
**Medium:** Silk



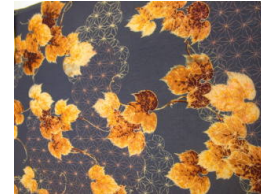
**Title:** Fragment of kimono  
**Date:** 1950s  
**Primary Maker:** Japanese  
**Medium:** Silk crepe



**Title:** Fragment of kimono lining  
**Date:** late 19th century  
**Primary Maker:** Japanese  
**Medium:** Silk



**Title:** Kimono fragment  
**Date:** 1930s  
**Primary Maker:** Japanese  
**Medium:** Silk



**Title:** Fragment of kimono cloth  
**Date:** late 19th century  
**Primary Maker:** Japanese  
**Medium:** Silk crepe



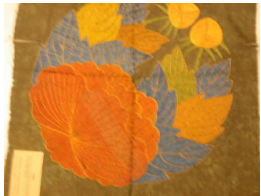
**Title:** Fragment of kimono cloth  
**Date:** late 19th century  
**Primary Maker:** Japanese  
**Medium:** Silk crepe



**Title:** Obi fragment  
**Date:** early 20th century  
**Primary Maker:** Japanese  
**Medium:** Silk



**Title:** Obi fragment  
**Date:** late 19th century  
**Primary Maker:** Japanese  
**Medium:** Silk



**Title:** Embroidered Family Crest  
**Date:** mid 19th century  
**Primary Maker:** Japanese  
**Medium:** Silk, embroidery



**Title:** Fragment  
**Date:** 19th century  
**Primary Maker:** Japanese  
**Medium:** Silk



**Title:** Fragment of lining cloth  
**Date:** late 19th century  
**Primary Maker:** Japanese  
**Medium:** Silk





**Title:** Panel  
**Date:** mid 19th century  
**Primary Maker:** Japanese  
**Medium:** Silk



**Title:** Runner  
**Date:** 19th century  
**Primary Maker:** Japanese  
**Medium:** Silk



**Title:** Scarf  
**Date:** 1950s  
**Primary Maker:** Thai  
**Medium:** Cotton, metallic thread



**Title:** King Abimelech Restores Sarah to Her Husband, Abraham  
**Date:** c. 1580  
**Primary Maker:** Frans Geubels  
**Medium:** Tapestry weave, wool and silk



**Title:** Embroidered panel  
**Date:** c. early 19th c  
**Primary Maker:** Chinese  
**Medium:** Silk



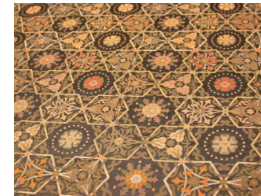
**Title:** Embroidered Banner  
**Date:** late 18th century  
**Primary Maker:** Chinese  
**Medium:** Silk



**Title:** Brocaded Panel  
**Date:** early 20th century  
**Primary Maker:** Chinese  
**Medium:** Silk



**Title:** Brocaded Panel  
**Date:** early 20th century  
**Primary Maker:** Chinese  
**Medium:** Silk



**Title:** Brocaded Textile  
**Date:** mid 19th century  
**Primary Maker:** Chinese  
**Medium:** Silk





**Title: Brocaded Textile**  
**Date:** mid 19th century  
**Primary Maker:** Chinese  
**Medium:** Silk



**Title: Brocaded Textile**  
**Date:** mid 19th century  
**Primary Maker:** Chinese  
**Medium:** Silk



**Title: Brocaded Textile**  
**Date:** mid 19th century  
**Primary Maker:** Chinese  
**Medium:** Silk



**Title: Brocaded Textile**  
**Date:** late 18th century  
**Primary Maker:** Chinese  
**Medium:** Silk, gold metallic thread

**Title: Brocaded Textile**  
**Date:** late 19th century  
**Primary Maker:** Chinese  
**Medium:** Silk



**Title: K'sou Woman's Robe**  
**Date:** mid 19th century  
**Primary Maker:** Chinese  
**Medium:** Silk



**Title: Embroidered panel**  
**Date:** mid 18th century  
**Primary Maker:** Chinese  
**Medium:** Silk



**Title: Dragon Robe**  
**Date:** c. 1670-1700  
**Primary Maker:** Chinese  
**Medium:** Silk



**Title: Textile fragment**  
**Date:** c. 1670-1700  
**Primary Maker:** Chinese  
**Medium:** Silk



**Title:** Panel of a Woman's Robe  
**Date:** mid 18th century  
**Primary Maker:** Chinese  
**Medium:** Silk, K'sou or Kesi



**Title:** Wall Hanging  
**Date:** First half of 19th century  
**Primary Maker:** Chinese  
**Medium:** Embroidered silk



**Title:** Imperial Robe  
**Date:** 1760-80  
**Primary Maker:** Chinese  
**Medium:** Silk-satin brocade with metallic thread



**Title:** Court Robe  
**Date:** 1850  
**Primary Maker:** Chinese  
**Medium:** Silk



**Title:** Woman's Robe  
**Date:** Early 20th century  
**Primary Maker:** Chinese  
**Medium:** Silk



**Title:** Fan  
**Date:** mid 19th century  
**Primary Maker:** European  
**Medium:** Paper, tortoise shell



**Title:** Fan Box  
**Date:** mid 19th century  
**Primary Maker:** European



**Title:** Fan



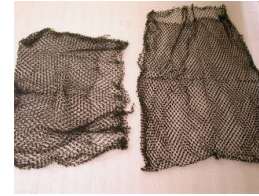
**Title:** Fan



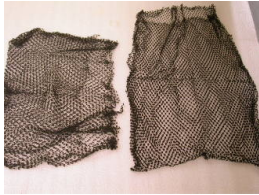
**Title: Fan**  
**Date:** 1870  
**Primary Maker:** French  
**Medium:** Lace, mother of pearl



**Title: Lace**  
**Medium:** Lace



**Title: Lace**  
**Medium:** Lace



**Title: Lace**  
**Medium:** Lace



**Title: Lace**  
**Medium:** Lace



**Title: Lace**  
**Medium:** Lace



**Title: Lace**  
**Medium:** Lace



**Title: Lace**  
**Medium:** Lace



**Title: Lace**  
**Medium:** Lace



**Title: Lace**  
**Medium: Lace**



**Title: Lace**  
**Medium: Lace**



**Title: Lace**  
**Medium: Lace**



**Title: Lace**  
**Medium: Lace**



**Title: Lace**  
**Medium: Lace**



**Title: Lace**  
**Medium: Lace**



**Title: Lace**  
**Medium: Lace**



**Title: Lace**  
**Medium: Lace**



**Title: Lace**  
**Medium: Lace**





**Title: Lace**  
**Medium: Lace**



**Title: Lace**  
**Medium: Lace**



**Title: Lace**  
**Medium: Lace**



**Title: Lace**  
**Medium: Lace**



**Title: Lace**  
**Medium: Lace**



**Title: Lace**  
**Medium: Lace**



**Title: Lace**  
**Medium: Lace**



**Title: Lace**  
**Medium: Lace**



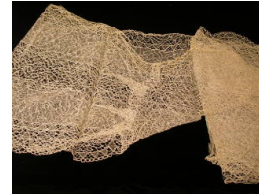
**Title: Lace**  
**Medium: Lace**



**Title: Lace**  
**Medium: Lace**



**Title: Lace**  
**Medium: Lace**



**Title: Lace**  
**Medium: Lace**



**Title: Lace**  
**Medium: Lace**



**Title: Lace**  
**Medium: Lace**



**Title: Lace**  
**Medium: Lace**



**Title: Lace**  
**Medium: Lace**



**Title: Lace**  
**Medium: Lace**



**Title: Lace**  
**Medium: Lace**



**Title: Lace**  
**Medium: Lace**



**Title: Lace**  
**Medium: Lace**



**Title: Lace**  
**Medium: Lace**



**Title: Lace**  
**Medium: Lace**



**Title: Lace**  
**Medium: Lace**



**Title: Lace**  
**Medium: Lace**



**Title: Lace**  
**Medium: Lace**



**Title: Lace**  
**Medium: Lace**



**Title: Lace**  
**Medium: Lace**



**Title: Lace**  
**Medium: Lace**



**Title: Lace**  
**Medium: Lace**



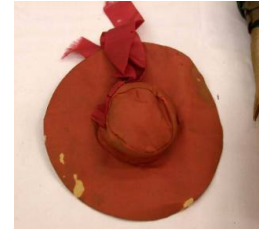
**Title: Lace**  
**Medium: Lace**



**Title: Lace**  
**Medium: Lace**



**Title: Doll**  
**Date: 1840-1850**  
**Primary Maker: American**  
**Medium: Wood, leather, fabrics**



**Title: Hat for Doll**  
**Date: 1840-1850**  
**Primary Maker: American**  
**Medium: Wood, leather, fabrics**



**Title: Orphrey band**  
**Date: 17th century**  
**Primary Maker: English**  
**Medium: Silk**



**Title: Orphrey Panel**  
**Date: 16th century**  
**Primary Maker: English**  
**Medium: Silk**



**Title: Spurs**  
**Date: 1776**  
**Primary Maker: American**





**Title:** Dress  
**Date:** 1810-1820  
**Primary Maker:** American  
**Medium:** Silk brocade



**Title:** Bodice of wedding dress  
**Date:** 1837  
**Primary Maker:** American  
**Medium:** Silk damask



**Title:** Collar of wedding dress  
**Date:** 1837  
**Primary Maker:** American  
**Medium:** Silk



**Title:** Pair of Shoe Insoles  
**Date:** 1837  
**Primary Maker:** c. Middleton



**Title:** Framed Embroidery  
**Date:** 1880-1900  
**Primary Maker:** American  
**Medium:** Silk satin fabric, chenille yarn embroidery



**Title:** Shawl  
**Medium:** Textile



**Title:** Tapestry  
**Primary Maker:** German  
**Medium:** Wool, silk, cotton



**Title:** Tapestry  
**Primary Maker:** German  
**Medium:** Wool, silk, cotton



**Title:** Tapestry  
**Primary Maker:** German  
**Medium:** Wool, silk, cotton



**Title:** Tapestry  
**Primary Maker:** German  
**Medium:** Wool, silk, cotton



**Title:** Tapestry  
**Primary Maker:** German  
**Medium:** Wool, silk, cotton



**Title:** Tapestry  
**Primary Maker:** German  
**Medium:** Wool, silk, cotton



**Title:** Armorial panel  
**Date:** 16th century  
**Primary Maker:** Italian  
**Medium:** Silk and metal



**Title:** Embroidered panel  
**Date:** 1760-1780  
**Primary Maker:** Venetian  
**Medium:** Silk



**Title:** Embroidered panel  
**Date:** 1760-1780  
**Primary Maker:** Venetian  
**Medium:** Silk



**Title:** Table Cover  
**Primary Maker:** Spanish  
**Medium:** Silk velvet



**Title:** Stole  
**Primary Maker:** Italian  
**Medium:** Velvet



**Title:** Maniple  
**Primary Maker:** Italian  
**Medium:** Velvet



**Title: Cope**  
**Date:** mid 18th century  
**Primary Maker:** Italian  
**Medium:** Silk velvet



**Title: Hanging, silk  
laidwork embroidery  
/on green silk damask  
center**  
**Primary Maker:** Italian  
**Medium:** Silk

**Title: Dalmatic**  
**Date:** 18th century  
**Primary Maker:** Italian  
**Medium:** Silk velvet



**Title: Cover**  
**Primary Maker:** Turkish  
**Medium:** Silk



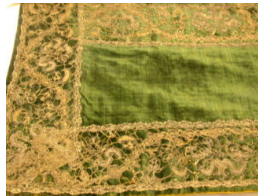
**Title: Altar Frontal**  
**Date:** 17th century  
**Primary Maker:** Spanish  
**Medium:** Silk



**Title: Armorial Hanging**  
**Date:** mid 17th century  
**Primary Maker:** Spanish  
**Medium:** Silk and metallic



**Title: Humosal Veil**  
**Date:** mid 18th century  
**Primary Maker:** Spanish  
**Medium:** Ivory silk  
embroidery



**Title: Table cover**  
**Date:** 18th century  
**Primary Maker:** Italian  
**Medium:** Silk



**Title: Silk Laidwork and  
Embroidered Hanging**  
**Date:** 17th century  
**Primary Maker:** Italian  
**Medium:** Silk and silk floss





**Title:** Table Cover  
**Date:** 17th century  
**Primary Maker:** Italian  
**Medium:** Silk



**Title:** Table Cover  
**Date:** 17th century  
**Primary Maker:** Italian  
**Medium:** Silk, embroidery



**Title:** Cope  
**Date:** late 18th century  
**Primary Maker:** French  
**Medium:** Silk brocaded taffeta



**Title:** Quilt  
**Primary Maker:** French  
**Medium:** Silk



**Title:** Altar Frontal  
**Date:** early 18th century  
**Primary Maker:** Italian  
**Medium:** Silk



**Title:** Altar Frontal  
**Date:** mid 17th century  
**Primary Maker:** Italian



**Title:** Table Runner  
**Date:** 18-20th century  
**Primary Maker:** Spanish  
**Medium:** Silk



**Title:** Sari  
**Date:** 1910-1920  
**Primary Maker:** Indian  
**Medium:** Silk brocade



**Title:** Sari Lace Border  
**Date:** 1910-1915  
**Primary Maker:** Indian  
**Medium:** Gold metallic thread





**Title:** Sampler  
**Date:** 1837  
**Primary Maker:** English  
**Medium:** Linen



**Title:** Band Sampler  
**Date:** c. 1660s  
**Primary Maker:** English  
**Medium:** Silk embroidery  
on linen



**Title:** Scarf  
**Date:** 17th century  
**Primary Maker:** Italian  
**Medium:** Linen



**Title:** Scarf  
**Date:** Early 18th century  
**Primary Maker:** Italian  
**Medium:** Linen



**Title:** Doilies  
**Primary Maker:** Italian  
**Medium:** Lace



**Title:** Scarf  
**Primary Maker:** Irish  
**Medium:** Lace



**Title:** Venise Lace  
**Tablecloth**  
**Date:** Early 20th century  
**Primary Maker:** Belgian  
**Medium:** Linen thread lace



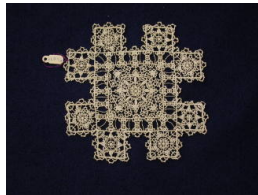
**Title:** Tablecloth  
**Date:** mid 19th century  
**Medium:** Cotton



**Title:** Chasuble with  
**Orphery Band**  
**Date:** 17th - 18th century  
**Primary Maker:** Italian  
**Medium:** Silk embroidered  
with gold thread



**Title:** Shawl  
**Date:** c. 1840-1850  
**Primary Maker:** Indian  
**Medium:** Wool



**Title:** Punto in Aria  
**Needlepoint**  
**Medium:** Lace



**Title:** Milan Fusioux  
**Bobbin**  
**Primary Maker:** Italian  
**Medium:** Lace



**Title:** Milan Fusioux  
**Bobbin**  
**Primary Maker:** Italian  
**Medium:** Lace



**Title:** Brugges Bobbin  
**Lace**  
**Primary Maker:** Belgian  
**Medium:** Lace



**Title:** Pointe de Flandre  
**Bobbin and Needlepoint**  
**Medium:** Lace



**Title:** Pointe de Flandre  
**Bobbin and Needlepoint**  
**Medium:** Lace



**Title:** Pointe de Flandre  
**Bobbin and Needlepoint**  
**Medium:** Lace



**Title:** Irish Needlepoint  
**Primary Maker:** Irish  
**Medium:** Lace



**Title:** Irish Needlepoint  
**Primary Maker:** Irish  
**Medium:** Lace



**Title:** Irish Needlepoint  
**Primary Maker:** Irish  
**Medium:** Lace



**Title:** Irish Needlepoint  
**Primary Maker:** Irish  
**Medium:** Lace



**Title:** Irish Needlepoint  
**Primary Maker:** Irish  
**Medium:** Lace



**Title:** Textile Fragment  
**Date:** Late Intermediate  
Period, A.D. 1000-1470  
**Primary Maker:** Chancay  
**Medium:** Camelid wool and  
cotton; double-cloth gauze  
weave with supplementary  
weft yarns



**Title:** Loincloth  
**Date:** Late Intermediate  
Period, A.D. 1000-1470  
**Primary Maker:** Peruvian  
**Medium:** Wool and cotton



**Title:** Handkerchief  
**Medium:** Linen, lace



**Title:** Handkerchief  
**Medium:** Lace



**Title:** Handkerchief  
**Medium:** Lace



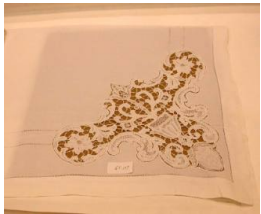
**Title:** Handkerchief  
**Medium:** Lace



**Title:** Chalis cover  
**Date:** 16th - 18th century  
**Primary Maker:** French  
**Medium:** Silk, embroidery



**Title:** Hanging  
**Date:** mid 18th century  
**Primary Maker:** French  
**Medium:** Silk



**Title:** Tablecloth  
**Medium:** Lace and linen



**Title:** Table cover  
**Date:** early 20th century  
**Primary Maker:** Italian  
**Medium:** Embroidered linen



**Title:** Handkerchief  
**Medium:** Linen





**Title:** Priest's Robe  
**Date:** c. 1791  
**Primary Maker:** Japanese  
**Medium:** Silk



**Title:** Kesa  
**Date:** 18th century  
**Primary Maker:** Chinese  
**Medium:** Silk



**Title:** Lace Tablecloth  
**Date:** early 20th century  
**Primary Maker:** European  
**Medium:** Linen



**Title:** Handmade Lace  
**Sample:** Point de Venise  
**Date:** 17th century  
**Primary Maker:** Italian  
**Medium:** Textile



**Title:** Handmade Lace  
**Sample:** Point de Venise  
**Date:** 17th century  
**Primary Maker:** Italian  
**Medium:** Textile



**Title:** Handmade Lace  
**Sample:** Point de France  
**Date:** 18th century  
**Primary Maker:** French  
**Medium:** Textile



**Title:** Handmade Lace  
**Sample:** Point d'Argentan  
**Date:** 18th century  
**Primary Maker:** French  
**Medium:** Textile



**Title:** Handmade Lace  
**Sample:** Point d'Argentan  
**Date:** 18th century  
**Primary Maker:** French  
**Medium:** Textile



**Title:** Handmade Lace  
**Sample:** Point d'Alençon  
**Date:** 18th century  
**Primary Maker:** French  
**Medium:** Textile



**Title:** Handmade Lace  
**Sample:** Point de Malines  
**Date:** 18th century  
**Primary Maker:** Flemish  
**Medium:** Textile



**Title:** Handmade Lace  
**Sample:** Point de Malines  
**Date:** 19th century  
**Primary Maker:** Flemish  
**Medium:** Textile



**Title:** Handmade Lace  
**Sample:** Vieux Binche  
**Date:** 18th century  
**Primary Maker:** French  
**Medium:** Textile



**Title:** Handmade Lace  
**Sample:** Binche  
**Date:** 18th century  
**Primary Maker:** Flemish  
**Medium:** Textile



**Title:** Lace Collar: Point de Bruxelles  
**Date:** 18th century  
**Primary Maker:** Flemish  
**Medium:** Textile



**Title:** Lace Collar: Valenciennes Cravatte  
**Date:** 18th century  
**Primary Maker:** French  
**Medium:** Textile



**Title:** Lace Flounce: Point de France  
**Date:** 17th century  
**Primary Maker:** French  
**Medium:** Textile



**Title:** Lace Flounce: Point d'Alençon  
**Date:** 18th century  
**Primary Maker:** French  
**Medium:** Textile



**Title:** Lace Flounce: Point de Venise  
**Date:** 17th century  
**Primary Maker:** Italian  
**Medium:** Textile



**Title:** Lace Flounce:  
**Point de Venise**  
**Date:** 17th century  
**Primary Maker:** Italian  
**Medium:** Textile



**Title:** Lace Flounce:  
**Point d'Alençon**  
**Date:** 18th century  
**Primary Maker:** French  
**Medium:** Textile



**Title:** Handmade Lace  
**Sample: Flounce, Point d'Argentan**  
**Date:** 18th century  
**Primary Maker:** French  
**Medium:** Textile



**Title:** Lace Runner:  
**Point de Flandres**  
**Date:** 18th century  
**Primary Maker:** Flemish  
**Medium:** Textile



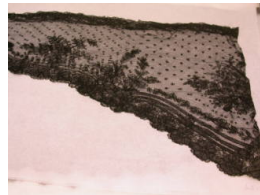
**Title:** Handmade Lace  
**Flounce: Point d'Alençon**  
**Date:** 18th century  
**Primary Maker:** French  
**Medium:** Textile



**Title:** Handmade Lace  
**Flounce: Point Venise**  
**Date:** 17th century  
**Primary Maker:** Italian  
**Medium:** Textile



**Title:** Table Runner  
**Date:** c. 1920  
**Primary Maker:** French  
**Medium:** Linen and Lace



**Title:** Chantilly Lace  
**Shawl**  
**Date:** mid 19th century  
**Primary Maker:** French  
**Medium:** Textile



**Title:** Chantilly Lace  
**Shawl**  
**Date:** mid 19th century  
**Primary Maker:** French  
**Medium:** Textile





**Title:** Lace Scarf  
**Primary Maker:** Philippino  
**Medium:** Textile



**Title:** Brussels Lace Cuff  
**Primary Maker:** European  
**Medium:** Textile



**Title:** Brussels Lace Cuff  
**Primary Maker:** European  
**Medium:** Textile



**Title:** Lace  
**Primary Maker:** European  
**Medium:** Textile



**Title:** Lace  
**Primary Maker:** European  
**Medium:** Textile



**Title:** Cutwork  
**Primary Maker:** European  
**Medium:** Linen



**Title:** Lace Medallion  
**Primary Maker:** European  
**Medium:** Lace



**Title:** Lace Sample: Ecru  
**Primary Maker:** European  
**Medium:** Textile



**Title:** Lace Sample:  
**Black**  
**Primary Maker:** European  
**Medium:** Textile





**Title:** Brussels Lace  
Curtain  
**Primary Maker:** European  
**Medium:** Textile



**Title:** Lace Shawl  
**Primary Maker:** European  
**Medium:** Textile



**Title:** Lace  
**Primary Maker:** European  
**Medium:** Linen



**Title:** Lace  
**Primary Maker:** European  
**Medium:** Linen



**Title:** Piece of Rose  
Point Lace  
**Primary Maker:** European  
**Medium:** Textile



**Title:** Lace Flounce  
**Date:** 19th century  
**Primary Maker:** French  
**Medium:** Textile



**Title:** Lace Flounce  
**Date:** 19th century  
**Primary Maker:** European  
**Medium:** Textile



**Title:** Skirt  
**Primary Maker:** Chinese  
**Medium:** Silk



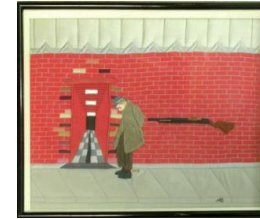
**Title:** Coverlet  
**Date:** c. 1845  
**Primary Maker:** American  
**Medium:** Cotton, wool



**Title:** I Was Hidin'  
**Primary Maker:** Mary Borkowski  
**Medium:** Silk, embroidery



**Title:** The Neighbor and the Nude  
**Primary Maker:** Mary Borkowski  
**Medium:** Silk, embroidery



**Title:** Distortion  
**Primary Maker:** Mary Borkowski  
**Medium:** Cotton, embroidery



**Title:** Indecision  
**Primary Maker:** Mary Borkowski  
**Medium:** Cotton, embroidery



**Title:** Orphrey Panels:  
**Left panel depicting Saint Dominic and Saint Thomas, Right panel depicting Mary Magdeline and Saint Peter**  
**Date:** 16th century  
**Primary Maker:** English  
**Medium:** Silk embroidery



**Title:** Chalice Cover  
**Date:** 16th century  
**Primary Maker:** English  
**Medium:** Silk, gold metallic thread



**Title:** Embroidered Panel  
**Date:** 16th century  
**Primary Maker:** Spanish  
**Medium:** Silk



**Title:** Dalmatic  
**Date:** 1760-1780  
**Primary Maker:** French  
**Medium:** Silk brocade



**Title:** Textile  
**Date:** 16th century  
**Primary Maker:** Spanish  
**Medium:** Silk



**Title:** Table Cover  
**Date:** 17-18th century  
**Primary Maker:** Spanish  
**Medium:** Silk velvet, embroidery



**Title:** Needlepoint  
**Date:** 1880s  
**Primary Maker:** German  
**Medium:** Wool



**Title:** Lampas  
**Date:** 19th century  
**Primary Maker:** French  
**Medium:** Silk



**Title:** Textile panel  
**Date:** late 17th century  
**Primary Maker:** Italian  
**Medium:** Silk



**Title:** Table Cover  
**Date:** 17th century  
**Primary Maker:** Spanish  
**Medium:** Silk



**Title:** Table Cover  
**Date:** 18th century  
**Primary Maker:** Spanish  
**Medium:** Silk damask



**Title:** Textile fragment with tapestry weave insert  
**Date:** 1575-1700 CE  
**Primary Maker:** Peruvian  
**Medium:** Wool (camelid or sheep)



**Title:** Chuspa (Man's Coca Leaf Bag)  
**Date:** Middle Horizon, A.D. 600-900  
**Primary Maker:** Peruvian  
**Medium:** Camelid fibers



**Title:** Tablecloth  
**Date:** 17th to early 18th century  
**Primary Maker:** Flemish  
**Medium:** Lace





**Title: Cardinal Point de Venise a Rose**

**Date:** 17th century  
**Primary Maker:** Italian  
**Medium:** Lace



**Title: Point de Venise a Rose**

**Date:** 17th century  
**Primary Maker:** Italian  
**Medium:** Lace



**Title: Point Plat de Venise**

**Date:** 17th century  
**Primary Maker:** Italian  
**Medium:** Lace



**Title: Part of a Kesi Robe**

**Date:** mid 19th century  
**Primary Maker:** Chinese  
**Medium:** Textile



**Title: Robe**

**Date:** Late 19th century  
**Primary Maker:** Chinese  
**Medium:** Brocaded gauze silk



**Title: Fan Case**

**Date:** early 19th century  
**Primary Maker:** Chinese  
**Medium:** Silk



**Title: Fan Case**

**Date:** early 19th century  
**Primary Maker:** Chinese  
**Medium:** Silk



**Title: Fan Case**

**Date:** mid 19th century  
**Primary Maker:** Chinese  
**Medium:** Silk



**Title: Fan Case**

**Date:** mid 19th century  
**Primary Maker:** Chinese  
**Medium:** Silk





**Title: Fan Case**

**Date:** mid 18th century

**Primary Maker:** Chinese

**Medium:** Silk



**Title: Fan Case**

**Date:** 19th century

**Primary Maker:** Chinese

**Medium:** Silk



**Title: Batik Sarong**

**Medium:** Textile



**Title: Batik**

**Medium:** Cotton



**Title: Rug**

**Date:** about 1880-1890

**Primary Maker:** Diné  
(Navajo)

**Medium:** Tapestry weave  
with commercial cotton  
warp and commercial wool



**Title: Embroidered  
Band**

**Date:** Early 20th century

**Primary Maker:** Chinese

**Medium:** Silk



**Title:** Priest's Robe  
**Date:** 19th century  
**Primary Maker:** Japanese  
**Medium:** Silk



**Title:** Lace  
**Medium:** Lace



**Title:** Lace  
**Primary Maker:** Belgian  
**Medium:** Lace



**Title:** Lace  
**Primary Maker:** Belgian  
**Medium:** Lace



**Title:** Lace  
**Primary Maker:** Flemish  
**Medium:** Lace



**Title:** Lace: Point  
Raphael  
**Medium:** Lace



**Title:** Lace  
**Primary Maker:** Italian  
**Medium:** Lace



**Title:** Lace  
**Primary Maker:** Italian  
**Medium:** Lace



**Title:** Lace  
**Primary Maker:** Belgian  
**Medium:** Lace



**Title:** Lace  
**Primary Maker:** Italian  
**Medium:** Silk



**Title:** Lappet  
**Primary Maker:** Flemish  
**Medium:** Lace



**Title:** Burano Lace  
**Primary Maker:** Italian  
**Medium:** Burano Lace



**Title:** Gros Pointe de Venise Lace  
**Date:** 17th century  
**Primary Maker:** Italian  
**Medium:** Lace



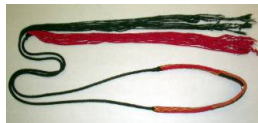
**Title:** Gros Pointe de Venise Lace  
**Date:** 17th century  
**Primary Maker:** Italian  
**Medium:** Lace



**Title:** Gros Pointe de Venise Lace  
**Date:** 17th century  
**Primary Maker:** Italian  
**Medium:** Lace



**Title:** Gros Pointe de Venise Lace  
**Date:** 17th century  
**Primary Maker:** Italian  
**Medium:** Lace

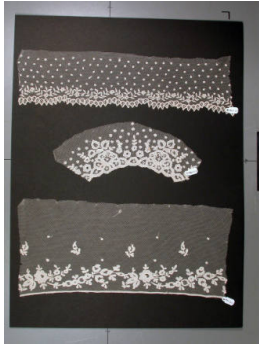


**Title:** Hunting Sling  
**Date:** c. 1950-1972  
**Primary Maker:** Inca  
**Medium:** Braided wool



**Title:** Examples of Limerick Lace  
**Date:** 19th century  
**Medium:** Lace





**Title: Examples of Applied Lace**  
**Date:** 19th century  
**Medium:** Lace



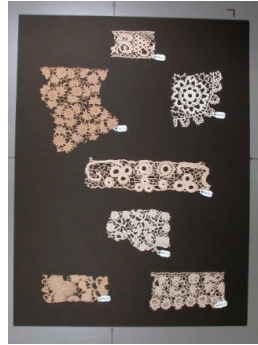
**Title: Examples of Needlepoint Lace**  
**Date:** 19th century  
**Medium:** Lace



**Title: Examples of Crochet Lace**  
**Date:** 19th century  
**Medium:** Lace



**Title: Examples of Crochet Lace**  
**Date:** 19th century  
**Medium:** Lace



**Title: Examples of Crochet Lace**  
**Date:** 19th century  
**Medium:** Lace



**Title: Examples of Crochet Lace**  
**Date:** 19th century  
**Medium:** Lace



**Title: Examples of Crochet Lace**  
**Date:** 19th century  
**Medium:** Lace



**Title: Examples of Crochet Lace**  
**Date:** 19th century  
**Medium:** Lace



**Title: Examples of Crochet Lace**  
**Date:** 19th century  
**Medium:** Lace

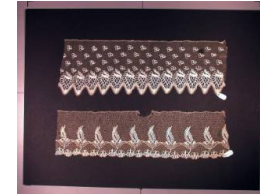




**Title: Examples of Crochet Lace**  
**Date:** 19th century  
**Medium:** Lace



**Title: Examples of Bobbin Lace**  
**Date:** 18th century  
**Medium:** Lace



**Title: Examples of Bobbin Lace**  
**Date:** 19th century  
**Medium:** Silk



**Title: Examples of Bobbin Lace**  
**Date:** 19th century  
**Medium:** Silk



**Title: Examples of Bobbin Lace**  
**Date:** 19th century  
**Medium:** Lace



**Title: Examples of Bobbin Lace**  
**Date:** 19th century  
**Medium:** Silk lace



**Title: Examples of Bobbin Lace**  
**Date:** 19th century  
**Medium:** Lace



**Title: Examples of Bobbin Lace**  
**Date:** 19th century  
**Medium:** Silk lace



**Title: Examples of Bobbin Lace**  
**Date:** Unknown  
**Medium:** Lace



**Title: Examples of Bobbin Lace**  
**Date:** Unknown  
**Medium:** Lace



**Title: Examples of Bobbin Lace**  
**Date:** 19th century  
**Medium:** Lace



**Title: Examples of Bobbin Lace**  
**Date:** 19th century  
**Medium:** Lace



**Title: Examples of Bobbin Lace**  
**Date:** 19th century  
**Medium:** Lace



**Title: Examples of Bobbin Lace**  
**Date:** 19th century  
**Medium:** Lace



**Title: Examples of Bobbin Lace**  
**Date:** 19th century  
**Medium:** Lace



**Title: Examples of Bobbin Lace**  
**Date:** 19th century  
**Medium:** Lace



**Title: Examples of Bobbin Lace**  
**Date:** 19th century  
**Medium:** Silk



**Title: Examples of Bobbin Lace**  
**Date:** 19th century  
**Medium:** Lace



**Title: Examples of Bobbin Lace**

**Date:** 19th century

**Medium:** Silk



**Title: Examples of Bobbin Lace**

**Date:** 19th century

**Medium:** Lace



**Title: Examples of Bobbin Lace**

**Date:** 19th century

**Medium:** Lace



**Title: Examples of Machine Net Lace**

**Date:** Unknown

**Medium:** Lace



**Title: Examples of Bobbin Lace**

**Date:** 19th century

**Medium:** Lace



**Title: Examples of Embroidered Mull**

**Date:** 19th century

**Medium:** Lace



**Title: Examples of Bobbin Lace Necklines**

**Date:** 18th or 19th century

**Medium:** Lace



**Title: Examples of Bobbin Lace Necklines**

**Date:** 18th or 19th century

**Medium:** Lace



**Title: Examples of Bobbin Lace**

**Date:** 19th century

**Medium:** Lace



**Title: Examples of  
Bobbin Lace**

**Date:** 18th or 19th century  
**Medium:** Lace



**Title: Examples of  
Bobbin Lace**

**Date:** 19th century  
**Medium:** Lace



**Title: Examples of  
Bobbin Lace**

**Date:** 18th or 19th century  
**Medium:** Lace



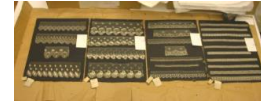
**Title: Examples of  
Bobbin Lace**

**Date:** 18th century  
**Medium:** Lace



**Title: Examples of  
Bobbin Lace**

**Date:** 19th century  
**Medium:** Lace



**Title: Examples of  
Bobbin Lace Edgings**

**Date:** 19th century  
**Medium:** Lace



**Title: Examples of  
Bobbin Lace**

**Date:** 18th or 19th century  
**Medium:** Lace



**Title: Examples of  
Bobbin Lace**

**Date:** 18th or 19th century  
**Medium:** Lace



**Title: Examples of  
Bobbin Lace**

**Date:** 19th century  
**Medium:** Lace





**Title: Examples of Bobbin Lace**

**Date:** 19th century

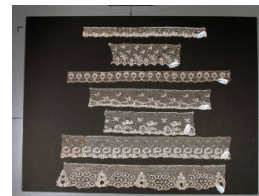
**Medium:** Lace



**Title: Examples of Bobbin Lace**

**Date:** 19th century

**Medium:** Lace



**Title: Examples of Bobbin Lace**

**Date:** 18th or 19th century

**Medium:** Lace



**Title: Examples of Bobbin Lace, Neckline Type**

**Date:** 19th century

**Medium:** Lace



**Title: Examples of Bobbin Lace**

**Date:** 18th or 19th century

**Medium:** Lace



**Title: Examples of Bobbin Lace**

**Date:** 18th or 19th century

**Medium:** Lace



**Title: Examples of Bobbin Lace**

**Date:** 19th century

**Medium:** Lace



**Title: Examples of Bobbin Lace**

**Date:** 19th century

**Medium:** Lace



**Title: Examples of Bobbin Lace**

**Date:** 18th or 19th century

**Medium:** Lace



**Title: Examples of Bobbin Lace**  
**Date:** 19th century  
**Medium:** Lace



**Title: Examples of Bobbin Lace**  
**Date:** 19th century  
**Medium:** Lace



**Title: Examples of Bobbin Lace**  
**Date:** 18th or 19th century  
**Medium:** Lace



**Title: Examples of Bobbin Lace**  
**Date:** 19th century  
**Medium:** Lace



**Title: Examples of Bobbin Lace**  
**Date:** 19th century  
**Medium:** Lace



**Title: Examples of Bobbin Lace**  
**Date:** 18th or 19th century  
**Medium:** Lace



**Title: Examples of Bobbin Lace**  
**Date:** 19th century  
**Medium:** Lace



**Title: Examples of Bobbin Lace**  
**Date:** 19th century  
**Medium:** Lace



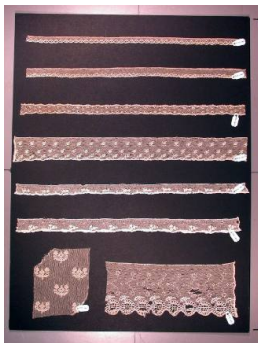
**Title: Examples of Bobbin Lace Edgings**  
**Date:** 18th or 19th century  
**Medium:** Lace



**Title: Examples of Bobbin Lace**

**Date:** 19th century

**Medium:** Lace



**Title: Examples of Bobbin Lace**

**Date:** 19th century

**Medium:** Lace



**Title: Examples of Bobbin Lace**

**Date:** 18th or 19th century

**Medium:** Lace



**Title: Examples of Bobbin Lace**

**Date:** 19th century

**Medium:** Lace



**Title: Examples of Bobbin Lace**

**Date:** 19th century

**Medium:** Lace



**Title: Examples of Bobbin Lace**

**Date:** 19th century

**Medium:** Lace



**Title: Examples of Bobbin Lace**

**Date:** 19th century

**Medium:** Lace



**Title: Examples of Bobbin Lace**

**Date:** 19th century

**Medium:** Lace



**Title: Examples of Bobbin Lace**

**Date:** 18th or 19th century

**Medium:** Lace



**Title: Examples of Bobbin Lace**

**Date:** 18th century

**Medium:** Lace



**Title: Examples of Bobbin Lace and Necklines**

**Date:** 18th century

**Medium:** Lace



**Title: Examples of Bobbin Lace and Neckline**

**Date:** 18th or 19th century

**Medium:** Lace



**Title: Examples of Bobbin Lace**

**Date:** 18th or 19th century

**Medium:** Lace



**Title: Examples of Bobbin Lace**

**Date:** 19th century

**Medium:** Lace



**Title: Examples of Bobbin Lace**

**Date:** 19th century

**Medium:** Lace



**Title: Examples of Bobbin Lace Wire Mesh**

**Date:** 19th century

**Medium:** Lace



**Title: Examples of Bobbin Lace**

**Date:** 19th century

**Medium:** Lace



**Title: Examples of Bobbin Lace**

**Date:** 19th century

**Medium:** Lace





**Title: Examples of Bobbin Lace**  
**Date:** 19th century  
**Medium:** Lace



**Title: Examples of Bobbin Lace Edgings**  
**Date:** 19th century  
**Medium:** Lace



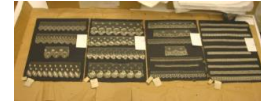
**Title: Examples of Bobbin Lace**  
**Date:** 18th or 19th century  
**Medium:** Lace



**Title: Examples of Silk Bobbin Lace**  
**Date:** 19th century  
**Medium:** Silk lace



**Title: Examples of Silk Bobbin Net Lace**  
**Date:** 19th century  
**Medium:** Silk lace



**Title: Examples of Silk Bobbin Net Lace**  
**Date:** 19th century  
**Medium:** Silk lace



**Title: Examples of Silk Bobbin Net Lace**  
**Date:** 19th century  
**Medium:** Silk lace



**Title: Examples of Silk Bobbin Net Lace**  
**Date:** 19th century  
**Medium:** Silk lace



**Title: Examples of Silk Bobbin Net Lace**  
**Date:** 19th century  
**Medium:** Silk lace



**Title: Examples of Silk Bobbin Net Lace**  
**Date:** 19th century  
**Medium:** Silk lace



**Title: Examples of Silk Bobbin Lace**  
**Date:** 19th century  
**Medium:** Silk lace



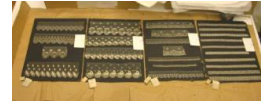
**Title: Examples of Silk Bobbin Lace**  
**Date:** 19th century  
**Medium:** Silk lace



**Title: Examples of Silk Bobbin Lace**  
**Date:** 19th century  
**Medium:** Silk lace



**Title: Examples of Silk Bobbin Lace**  
**Date:** 19th century  
**Medium:** Silk lace



**Title: Examples of Silk Bobbin Lace**  
**Date:** 19th century  
**Medium:** Silk lace



**Title: Examples of Silk Bobbin Lace**  
**Date:** 19th century  
**Medium:** Silk lace



**Title: Examples of Silk Bobbin Lace**  
**Date:** 19th century  
**Medium:** Silk lace



**Title: Examples of Silk Bobbin Lace**  
**Date:** 19th century  
**Medium:** Silk lace



**Title:** Examples of  
Bobbin Lace Insertions  
**Date:** 19th century  
**Medium:** Lace



**Title:** Examples of  
Bobbin Lace Collars  
**Date:** 19th century  
**Medium:** Lace



**Title:** Examples of  
Bobbin Lace Collars  
**Date:** Unknown  
**Medium:** Lace



**Title:** Examples of  
Venetian Needlepoint  
Lace  
**Date:** Modern  
**Medium:** Lace



**Title:** Examples of  
Bobbin Lace  
**Date:** 18th century  
**Medium:** Lace



**Title:** Examples of  
Bobbin Lace  
**Date:** 18th century  
**Medium:** Lace



**Title:** Examples of  
Bobbin Lace  
**Date:** 18th century  
**Medium:** Lace



**Title:** Examples of  
Bobbin Lace  
**Date:** 18th century  
**Medium:** Lace



**Title:** Examples of  
Bobbin Lace  
**Date:** 19th century  
**Medium:** Lace



**Title:** Examples of Silk and Linen Lace  
**Date:** Unknown  
**Medium:** Lace



**Title:** Examples of Embroidered Linen Border  
**Date:** 18th century  
**Medium:** Lace



**Title:** Examples of Embroidered Linen  
**Date:** 18th century  
**Medium:** Lace



**Title:** Tunic  
**Date:** Middle Horizon, A.D. 600-900  
**Primary Maker:** Tiahuanaco  
**Medium:** Wool



**Title:** Lappet  
**Medium:** Lace



**Title:** Lace  
**Date:** 18th century  
**Primary Maker:** Italian  
**Medium:** Lace



**Title:** Lace Runner  
**Date:** 17th - 18th century  
**Medium:** Lace



**Title:** Lace  
**Medium:** Lace



**Title:** Panel  
**Primary Maker:** Chinese  
**Medium:** Silk, embroidery





**Title:** Lace Barb  
**Date:** 19th century  
**Primary Maker:** Belgian  
**Medium:** Lace



**Title:** Barb  
**Primary Maker:** Belgian  
**Medium:** Lace



**Title:** Fan  
**Date:** mid 19th century  
**Primary Maker:** Belgian  
**Medium:** Lace



**Title:** Carpet  
**Date:** 20th century  
**Primary Maker:** Moroccan  
**Medium:** Wool



**Title:** Robe  
**Primary Maker:** Chinese  
**Medium:** Silk



**Title:** Collar  
**Date:** c. 1928  
**Primary Maker:** Belgian  
**Medium:** Lace



**Title:** Kesa  
**Date:** 18th century  
**Primary Maker:** Japanese  
**Medium:** Silk



**Title:** Skirt  
**Primary Maker:** Chinese  
**Medium:** Satin



**Title:** Robe  
**Date:** late 19th century  
**Primary Maker:** Chinese  
**Medium:** Silk



**Title: Robe**  
**Primary Maker:** Chinese  
**Medium:** Silk



**Title: Panel**  
**Primary Maker:** Chinese  
**Medium:** Silk



**Title: K'o-ssu**  
**Primary Maker:** Chinese



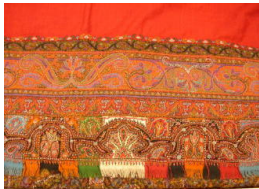
**Title: K'o-ssu**  
**Primary Maker:** Chinese



**Title: Quilt**  
**Date:** c. 1894  
**Primary Maker:** American  
**Medium:** Silk, cotton, wool  
and rayon



**Title: Shawl**  
**Date:** c. 1840-1850  
**Primary Maker:** French  
**Medium:** Silk



**Title: Shawl**  
**Date:** c. 1840-1860  
**Primary Maker:** Indian  
**Medium:** Wool



**Title: Shawl**  
**Primary Maker:** Indian



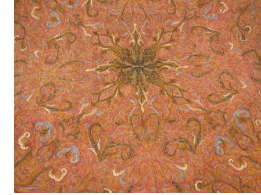
**Title: Shawl**  
**Date:** c. 1840-1860  
**Primary Maker:** Indian  
**Medium:** Wool



**Title:** Shawl  
**Primary Maker:** Indian  
**Medium:** Wool



**Title:** Shawl  
**Date:** c. 1840-1850  
**Primary Maker:** Indian  
**Medium:** Wool



**Title:** Shawl  
**Date:** c. 1850-1860  
**Primary Maker:** Indian  
**Medium:** Wool



**Title:** Child's Button Blanket  
**Date:** about 1850-1870  
**Primary Maker:** Tlingit people  
**Medium:** Wool and cotton with mother-of-pearl buttons



**Title:** Shawl  
**Date:** c. 1850-1860  
**Primary Maker:** Indian  
**Medium:** Wool



**Title:** Duchess Lace  
**Medium:** Lace



**Title:** Rosepoint Lace  
**Medium:** Lace



**Title:** Rosepoint Lace  
**Medium:** Lace



**Title:** Rosepoint Lace  
**Medium:** Lace





**Title:** Rosepoint Lace  
**Medium:** Lace



**Title:** Lappet  
**Medium:** Lace



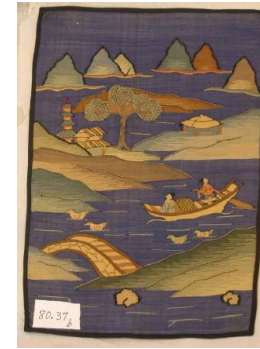
**Title:** Rosepoint Lace Collar  
**Medium:** Lace



**Title:** Lappet  
**Medium:** Lace



**Title:** K'ossu Tapestry-Weave, One of a pair  
**Date:** early 20th century  
**Primary Maker:** Chinese  
**Medium:** Tapestry weave



**Title:** K'ossu Tapestry-Weave, One of a pair  
**Date:** early 20th century  
**Primary Maker:** Chinese  
**Medium:** Tapestry weave



**Title:** Shawl  
**Date:** early 20th century  
**Primary Maker:** Chinese  
**Medium:** Silk



**Title:** Shawl  
**Date:** early 20th century  
**Primary Maker:** Chinese  
**Medium:** Silk



**Title:** Shawl  
**Date:** 1880-1920  
**Primary Maker:** Chinese  
**Medium:** Silk





**Title:** Shawl  
**Date:** 1880-1920  
**Primary Maker:** Chinese  
**Medium:** Silk



**Title:** Quilt  
**Date:** 1850-1860  
**Primary Maker:** American  
**Medium:** Cotton



**Title:** Brides Quilt  
**Date:** 1840  
**Primary Maker:** American  
**Medium:** Cotton



**Title:** Sennah Rug  
**Date:** c. 1880  
**Primary Maker:** Near Eastern  
**Medium:** Wool



**Title:** Blanket  
**Date:** about 1880-1890  
**Primary Maker:** Diné (Navajo)  
**Medium:** Wool, cotton warp



**Title:** Poncho  
**Date:** 1960s  
**Primary Maker:** Peruvian  
**Medium:** Wool



**Title:** Rug  
**Date:** about 1880-1920  
**Primary Maker:** Diné (Navajo)  
**Medium:** Tapestry weave, hand-spun wool



**Title:** Coverlet  
**Date:** 1848  
**Primary Maker:** American  
**Medium:** Cotton, wool



**Title:** Coverlet  
**Date:** mid 19th century  
**Primary Maker:** American  
**Medium:** Wool, linen



**Title:** Manilla Shawl  
**Date:** 1920s  
**Primary Maker:** Chinese  
**Medium:** Silk



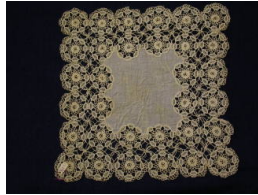
**Title:** Jacket  
**Date:** mid 20th century  
**Primary Maker:** Chinese  
**Medium:** Silk



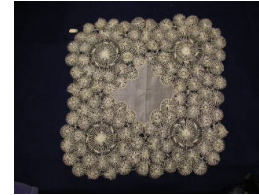
**Title:** Skirt  
**Date:** mid 20th century  
**Primary Maker:** Chinese  
**Medium:** Silk



**Title:** Handkerchief  
**Medium:** Linen, lace



**Title:** Handkerchief  
**Medium:** Linen, lace



**Title:** Handkerchief  
**Medium:** Silk



**Title:** Embroidered Panel  
**Date:** 1920-1930  
**Primary Maker:** Mexican  
**Medium:** Cotton



**Title:** Hapi Coat  
**Date:** 1960-1970  
**Primary Maker:** Japanese  
**Medium:** Cotton



**Title:** Shinso-Obi  
**Date:** 1960-1970  
**Primary Maker:** Japanese  
**Medium:** Silk brocade



**Title:** Shinso-Obi  
**Date:** 1960-1970  
**Primary Maker:** Japanese  
**Medium:** Silk brocade



**Title:** Souvenir Box of Extachrome slides  
**"Glimpse of Japan Series: Women wearing Colorful Kimono"**  
**Date:** mid 20th century  
**Primary Maker:** Ko-on Studios, Ltd.  
**Medium:** Extachrome on acetate prints, cardboard, printed ink on paper



**Title:** Sleeveless Tunic  
**Date:** c. 1850  
**Primary Maker:** Chinese  
**Medium:** Silk



**Title:** Skirt  
**Date:** c. 1850  
**Primary Maker:** Chinese  
**Medium:** Silk

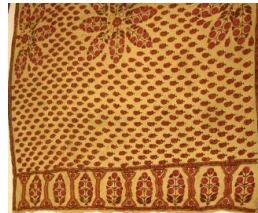
**Title:** Rug  
**Date:** c. 1850 -1875  
**Primary Maker:** Turkish  
**Medium:** Wool



**Title:** Quilt Square  
**Date:** c. 1834  
**Primary Maker:** American  
**Medium:** Cotton



**Title:** Quilt Square  
**Date:** c. 1834  
**Primary Maker:** American  
**Medium:** Cotton



**Title:** Head Veil  
**Date:** early 20th century  
**Primary Maker:** Indian  
**Medium:** Cotton, silk floss embroidery



**Title:** Coverlet  
**Date:** 1820-1840  
**Primary Maker:** American  
**Medium:** Cotton, wool





**Title:** Coverlet  
**Date:** 1820-1830  
**Primary Maker:** American  
**Medium:** Cotton, wool



**Title:** Coverlet  
**Date:** 1840-1850  
**Primary Maker:** American  
**Medium:** Wool, cotton



**Title:** Coverlet  
**Date:** 1840s  
**Primary Maker:** American  
**Medium:** Wool, cotton



**Title:** Coverlet  
**Date:** 1820-1825  
**Primary Maker:** American  
**Medium:** Wool, cotton



**Title:** Coverlet  
**Date:** 1820  
**Primary Maker:** American  
**Medium:** Wool, cotton



**Title:** Coverlet  
**Date:** 1820-1825  
**Primary Maker:** American  
**Medium:** Wool, cotton



**Title:** Coverlet  
**Date:** mid 1850s  
**Primary Maker:** American  
**Medium:** Wool, cotton



**Title:** Coverlet  
**Date:** 1850-1860  
**Primary Maker:** American  
**Medium:** Wool, cotton



**Title:** Coverlet  
**Date:** 1820  
**Primary Maker:** American  
**Medium:** Wool, cotton





**Title:** Coverlet  
**Date:** 1842  
**Primary Maker:** American  
**Medium:** Wool, cotton



**Title:** Coverlet  
**Date:** 1842  
**Primary Maker:** American  
**Medium:** Wool, cotton



**Title:** Coverlet  
**Date:** 1845  
**Primary Maker:** American  
**Medium:** Wool, cotton



**Title:** Coverlet  
**Date:** 1844  
**Primary Maker:** American  
**Medium:** Wool, cotton



**Title:** Coverlet  
**Date:** mid 1840s  
**Primary Maker:** American  
**Medium:** Linen, cotton



**Title:** Coverlet  
**Date:** 1945  
**Primary Maker:** Henry  
Gabriel  
**Medium:** Wool, cotton



**Title:** Tablecloth  
**Date:** mid 19th century  
**Primary Maker:** American  
**Medium:** Linen, damask



**Title:** Banquet Cloth  
**Date:** Late 19th century  
**Primary Maker:** Belgian  
**Medium:** Gros-point lace



**Title:** Shawl  
**Date:** c. 1850  
**Primary Maker:** Scottish



**Title:** Hooked Rug  
**Date:** c. 1850  
**Primary Maker:** American  
**Medium:** Cotton



**Title:** "Sawtooth" or "Pineapple" Quilt  
**Date:** c. 1840-1880  
**Medium:** Cotton applique



**Title:** "Ohio Rose" or "California Rose" Quilt  
**Date:** c. 1840-1880  
**Medium:** Cotton applique



**Title:** Quilt  
**Date:** c. 1820-1840  
**Medium:** Cotton applique



**Title:** Coverlet  
**Primary Maker:** American  
**Medium:** Wool



**Title:** Coverlet  
**Date:** 1850-1860  
**Primary Maker:** American  
**Medium:** Wool, cotton



**Title:** Coverlet fragment  
**Date:** Late 18th century  
**Primary Maker:** American  
**Medium:** Wool



**Title:** Fragment of an overshot coverlet  
**Date:** 1850  
**Primary Maker:** American  
**Medium:** Wool



**Title:** Obi fabric  
**Date:** Early 20th century  
**Primary Maker:** Japanese  
**Medium:** Silk and embroidered thread (kinran)



**Title: Shawl**  
**Primary Maker:** Italian  
**Medium:** Silk



**Title: Kimono**  
**Date:** 19th century  
**Primary Maker:** Japanese  
**Medium:** Silk



**Title: Sash**  
**Date:** early 20th century  
**Primary Maker:** Japanese  
**Medium:** Silk



**Title: Sash**  
**Date:** early 20th century  
**Primary Maker:** Japanese  
**Medium:** Silk



**Title: Haori Coat**  
**Primary Maker:** Japanese  
**Medium:** Silk



**Title: Skirt**  
**Date:** mid 20th century  
**Primary Maker:** Thai  
**Medium:** Silk



**Title: Hooked Rug**  
**Date:** Late 19th century  
**Primary Maker:** American  
**Medium:** Cotton



**Title: Candlewick Spread**  
**Date:** 1813  
**Primary Maker:** American  
**Medium:** Cotton



**Title: Quilt: Whig Rose Pattern**  
**Date:** 1840-1860  
**Medium:** Cotton applique

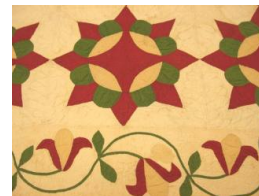




**Title: "Pineapple" Quilt**  
**Date:** c. 1850  
**Primary Maker:** S. Fooks Wright  
**Medium:** Cotton applique



**Title: Quilt: Whig Rose Design**  
**Date:** c. 1840-1880  
**Primary Maker:** Elizabeth Reinhaller  
**Medium:** Cotton applique



**Title: Quilt**  
**Date:** c. 1840-1880  
**Medium:** Cotton applique



**Title: Quilt: Love Apple Design**  
**Date:** c. 1840-1880  
**Primary Maker:** Carrie Kuns  
**Medium:** Cotton applique



**Title: Wall Hanging**  
**Date:** late 19th century  
**Primary Maker:** Chinese  
**Medium:** Silk, embroidery



**Title: Robe**  
**Date:** early 20th century  
**Primary Maker:** Chinese  
**Medium:** Silk, embroidery



**Title: Banner**  
**Date:** early 20th century  
**Primary Maker:** Chinese  
**Medium:** Silk, embroidery

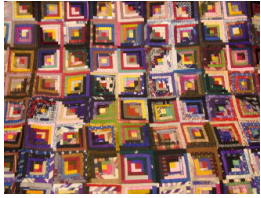


**Title: Banner**  
**Date:** mid 19th century  
**Primary Maker:** Chinese  
**Medium:** Silk, embroidery



**Title: Double Shawl**  
**Date:** c. 1860-1880  
**Primary Maker:** Scottish  
**Medium:** Wool





**Title: Quilt**  
**Primary Maker: American**  
**Medium: Silk**



**Title: Collar**  
**Medium: Lace**



**Title: Cuff**  
**Medium: Lace**



**Title: Cuff**  
**Medium: Lace**



**Title: Collar**  
**Medium: Lace**



**Title: Cuff**  
**Medium: Lace**



**Title: Cuff**  
**Medium: Lace**



**Title: Collar**  
**Medium: Lace**



**Title: Panel**  
**Medium: Lace**



**Title: Panel**  
**Medium: Lace**



**Title: Handkerchief**  
**Medium: Lace, linen**



**Title: Edging panel**  
**Medium: Lace, linen**



**Title: Collar**  
**Medium: Lace**



**Title: Collar**  
**Medium: Lace**



**Title: Collar**  
**Medium: Lace**



**Title: Collar**  
**Medium: Lace**



**Title: Edging**  
**Medium: Lace**



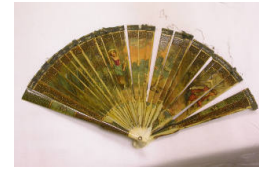
**Title: Edging**  
**Medium: Lace**



**Title:** Quilt: Whig Rose Pattern  
**Date:** c. 1840-1860  
**Medium:** Cotton applique



**Title:** Coverlet  
**Date:** 1924  
**Primary Maker:** Harriett Howard Bright  
**Medium:** Wool



**Title:** Fan  
**Date:** c. 1890  
**Primary Maker:** French  
**Medium:** Ivory, pigments



**Title:** Coverlet: Peace and Plenty  
**Date:** 1848  
**Primary Maker:** American  
**Medium:** Wool, cotton



**Title:** Quilt  
**Date:** c. 1930-1940  
**Primary Maker:** Mamie Lee Ballard  
**Medium:** Cotton



**Title:** Fan  
**Date:** c. 1880  
**Primary Maker:** French  
**Medium:** Painted wood, feathers



**Title:** Lady's coat  
**Date:** c. 1900  
**Primary Maker:** Chinese  
**Medium:** Silk



**Title:** Cut-velvet Rug  
**Date:** early 19th century  
**Primary Maker:** Chinese  
**Medium:** Silk



**Title:** Panel  
**Date:** Late 19th century  
**Primary Maker:** Chinese  
**Medium:** Silk





**Title:** THANG-KA  
**Primary Maker:** Tibetan  
**Medium:** Silk



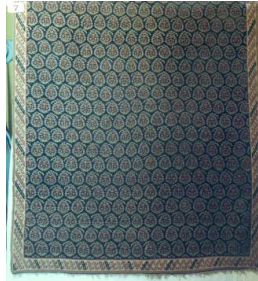
**Title:** Kesi tapestry  
**weave**  
**Date:** late 19th century  
**Primary Maker:** Chinese  
**Medium:** Silk



**Title:** Buddhist robe  
**Date:** 1800-1850  
**Primary Maker:** Japanese  
**Medium:** Silk



**Title:** Battenburg,  
Dresser Scarf  
**Medium:** Lace



**Title:** Senna Kilim Rug  
**Primary Maker:** Turkish  
**Medium:** Wool



**Title:** Kain Panjang  
**Date:** after 1965  
**Primary Maker:** Indonesian  
**Medium:** Cotton



**Title:** Table Cover  
**Date:** mid 1930s  
**Primary Maker:** Sardinian  
**Medium:** Wool, linen



**Title:** Table Runner  
**Date:** 1940s  
**Primary Maker:** Sardinian  
**Medium:** Linen, wool



**Title:** Sarong  
**Date:** 1900-1920  
**Primary Maker:** Javanese  
**Medium:** Cotton





**Title:** Kain Panjang  
**Date:** 1900-1920  
**Primary Maker:** Javanese  
**Medium:** Cotton



**Title:** Sarong  
**Date:** 1920-1930  
**Primary Maker:** Javanese  
**Medium:** Cotton



**Title:** Bolt of cloth  
**Primary Maker:** Indonesian  
**Medium:** Cotton



**Title:** Shawl  
**Date:** 1940-1950  
**Primary Maker:** Indonesian  
**Medium:** Cotton



**Title:** Kain Songket  
**Date:** c. 1930s  
**Primary Maker:** Balinese  
**Medium:** Silk



**Title:** Sari  
**Date:** c. 1940-1950  
**Primary Maker:** Indian  
**Medium:** Silk



**Title:** Stole  
**Date:** 1930s  
**Primary Maker:** Indian  
**Medium:** Silk, gold and silver thread

**Title:** Dress Fabric  
**Primary Maker:** Thai  
**Medium:** Silk, gold thread



**Title:** Textile  
**Date:** 1940-1950  
**Primary Maker:** Indian  
**Medium:** Silk, gold thread



**Title:** Panel  
**Date:** n.d.  
**Primary Maker:** Korean  
**Medium:** Silk



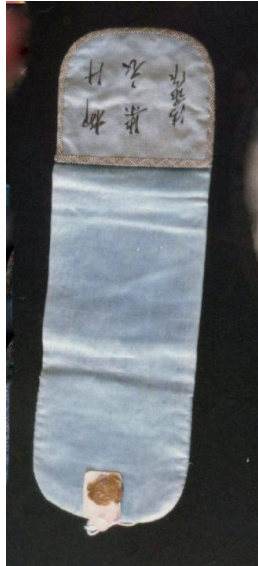
**Title:** Panel  
**Date:** n.d.  
**Primary Maker:** Korean  
**Medium:** Silk



**Title:** Dress Fabric  
**Date:** c. 1960  
**Primary Maker:** Congolese  
**Medium:** Cotton



**Title:** Cap  
**Date:** 1960s  
**Primary Maker:** Chinese  
**Medium:** Silk



**Title:** Folding case  
**Primary Maker:** Chinese  
**Medium:** Silk



**Title:** Folding case  
**Primary Maker:** Chinese  
**Medium:** Silk



**Title:** Watch case  
**Primary Maker:** Chinese  
**Medium:** Silk



**Title:** Kalaga  
**Date:** early 20th century  
**Primary Maker:** Myanmari (Burmese)  
**Medium:** Velveteen, sequins, glass and metallic threads



**Title:** Kalaga  
**Date:** early 20th century  
**Primary Maker:** Myanmari (Burmese)  
**Medium:** Velveteen, sequins, glass and metallic threads



**Title:** Lafayette Commemorative Coverlet  
**Date:** 1824  
**Primary Maker:** American  
**Medium:** Double weave, Jacquard loom, blue and white cotton



**Title:** Crib Quilt  
**Date:** c. 1780-1790  
**Primary Maker:** American  
**Medium:** Cotton



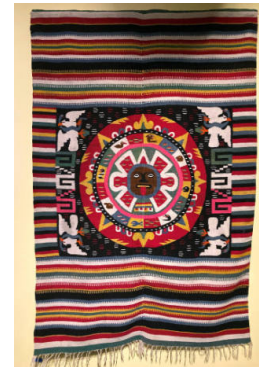
**Title:** Double Quilt  
**Date:** 1850-1855  
**Primary Maker:** American  
**Medium:** Cotton



**Title:** Quilt  
**Date:** c. 1795-1805  
**Primary Maker:** American  
**Medium:** Cotton



**Title:** Stole  
**Primary Maker:** Egyptian  
**Medium:** Cotton



**Title:** Stone of the Fifth Sun  
**Date:** c. 1935  
**Primary Maker:** Mexican  
**Medium:** Woven wool blanket





**Title:** Coverlet with designs of birds, flowers and stars  
**Date:** 1848  
**Primary Maker:** C. B. Oden  
**Medium:** Wool, in navy blue, yellow-gold, red and white



**Title:** Coverlet  
**Date:** 1839  
**Primary Maker:** Peter Lorenz  
**Medium:** Wool, cotton



**Title:** Furisode  
**Date:** late 19th century  
**Primary Maker:** Japanese  
**Medium:** Silk



**Title:** Kosode  
**Primary Maker:** Japanese  
**Medium:** Silk



**Title:** Kimono  
**Date:** late 19th century  
**Primary Maker:** Japanese  
**Medium:** Silk



**Title:** Obi  
**Date:** late 19th - early 20th century  
**Primary Maker:** Japanese  
**Medium:** Silk woven gold and silver thread



**Title:** Robe  
**Primary Maker:** Chinese  
**Medium:** Silk



**Title:** Purse  
**Date:** mid 20th century  
**Primary Maker:** Japanese  
**Medium:** Silk



**Title:** Wrist Pouch  
**Primary Maker:** Japanese  
**Medium:** Silk





**Title:** Fly Wisk  
**Primary Maker:** Japanese  
**Medium:** Silk



**Title:** Tablecloth  
**Medium:** Linen, cotton  
embroidery



**Title:** Kimono  
**Date:** mid 20th century  
**Primary Maker:** Japanese  
**Medium:** Silk



**Title:** Furisode  
**Primary Maker:** Japanese  
**Medium:** Silk



**Title:** Obi  
**Date:** mid 20th century  
**Primary Maker:** Japanese  
**Medium:** Silk, metallic  
thread



**Title:** Sash  
**Primary Maker:** Japanese  
**Medium:** Silk



**Title:** Parasol  
**Date:** 20th century  
**Primary Maker:** Japanese  
**Medium:** Silk brocade



**Title:** Coverlet  
**Date:** 1830-1840  
**Primary Maker:** American  
**Medium:** Cotton, wool



**Title:** Coverlet  
**Date:** 1849  
**Primary Maker:** American  
**Medium:** Wool, cotton



**Title:** Coverlet fragment  
**Date:** 1830-1840  
**Primary Maker:** American  
**Medium:** Wool with cotton  
(or linen)



**Title:** Coverlet fragment  
**Date:** 1830-1840  
**Primary Maker:** American  
**Medium:** Wool with cotton  
(or linen)



**Title:** Wedding Veil  
**Date:** c. 1830  
**Medium:** Lace



**Title:** Scarf  
**Medium:** Lace



**Title:** Rosepoint Collar  
**Medium:** Lace



**Title:** Handkerchief  
**Medium:** Lace



**Title:** Baby Collar  
**Primary Maker:** Belgian  
**Medium:** Lace



**Title:** Heart-shaped  
insert  
**Primary Maker:** Italian  
**Medium:** Lace



**Title:** Heart-shaped  
insert  
**Primary Maker:** Italian  
**Medium:** Lace



**Title: V-Shaped insert**  
**Medium: Lace**



**Title: Doily**  
**Medium: Lace**



**Title: Lace Doilie**  
**Primary Maker: American**  
**Medium: Lace**



**Title: Lace Doilie**  
**Primary Maker: American**  
**Medium: Lace**



**Title: Doily**  
**Medium: Lace**



**Title: Dress with matching Belt**  
**Date: c. 1950s**  
**Medium: Lace, leather**



**Title: Handkerchief**  
**Medium: Lace, linen**



**Title: Piece of Cluny Lace Edging**  
**Primary Maker: French**  
**Medium: Lace**



**Title: Piece of Cluny Lace Edging**  
**Primary Maker: French**  
**Medium: Lace**



**Title:** Piece of Cluny  
Lace Edging  
**Primary Maker:** French  
**Medium:** Lace



**Title:** Piece of  
Valenciennes Lace  
Edging  
**Primary Maker:** French  
**Medium:** Lace



**Title:** Piece of  
Valenciennes Lace  
Edging  
**Primary Maker:** French  
**Medium:** Lace



**Title:** Piece of Black  
Chantilly Lace Flounce  
**Primary Maker:** French  
**Medium:** Lace



**Title:** Piece of Black  
Chantilly Lace Flounce  
**Primary Maker:** French  
**Medium:** Lace



**Title:** Piece of Black  
Chantilly Lace Flounce  
**Primary Maker:** French  
**Medium:** Lace



**Title:** Paisley Shawl  
**Date:** 1865  
**Primary Maker:** Scottish  
**Medium:** Wool



**Title:** Priest Robe (kesa)  
**Date:** late 18th century  
**Primary Maker:** Japanese  
**Medium:** Silk brocade



**Title:** Wedding Shawl  
**Date:** 20th century  
**Primary Maker:** Indian  
**Medium:** Cotton tie-dye,  
embroidery

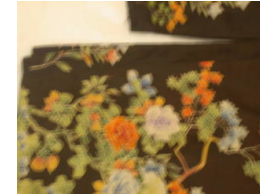




**Title:** Frontal Panel  
**Date:** Late 19th century  
**Primary Maker:** Chinese  
**Medium:** Silk



**Title:** Rug  
**Date:** about 1921-1931  
**Primary Maker:** Diné (Navajo)  
**Medium:** Wool, cotton, natural dyes



**Title:** Haori  
**Primary Maker:** Japanese  
**Medium:** Silk



**Title:** Candlewick Bedspread  
**Date:** 1831  
**Primary Maker:** American  
**Medium:** Cotton



**Title:** Quilt: Hearts and Flowers ( Wedding Quilt with Initials)  
**Date:** 1852  
**Primary Maker:** American  
**Medium:** Appliqued cotton



**Title:** Quilt  
**Date:** c. 1820-1840  
**Primary Maker:** Irish  
**Medium:** Embroidered and appliqued cottons



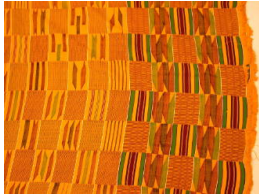
**Title:** Quilt  
**Date:** c. 1810-1820  
**Primary Maker:** Irish  
**Medium:** Embroidered and appliqued silk



**Title:** Fan  
**Date:** 1870-1880  
**Primary Maker:** Chinese  
**Medium:** Silk



**Title:** Suzani  
**Date:** 1920s  
**Primary Maker:** Uzbek  
**Medium:** Linen



**Title:** Kente Cloth Panel  
**Date:** post 1945  
**Primary Maker:** Asante people  
**Medium:** Cotton, rayon



**Title:** Kente Cloth Body Wrapper  
**Date:** mid 20th century  
**Primary Maker:** Asante people  
**Medium:** Silk



**Title:** Mandarin Skirt Apron  
**Date:** 19th century  
**Primary Maker:** Chinese  
**Medium:** Silk



**Title:** Mandarin Skirt Apron  
**Date:** 19th century  
**Primary Maker:** Chinese  
**Medium:** Silk



**Title:** Embroidery Fragment  
**Date:** 18th century  
**Primary Maker:** Chinese  
**Medium:** Silk



**Title:** Embroidery Fragment  
**Date:** 18th century  
**Primary Maker:** Chinese  
**Medium:** Silk



**Title:** Priest's Robe (Kesa)  
**Date:** Edo period, 18th-19th century  
**Primary Maker:** Japanese  
**Medium:** Silk



**Title:** Placemat  
**Date:** C. 1920'S  
**Primary Maker:** Italian  
**Medium:** Linen, Point Venise Lace



**Title:** Placemat  
**Date:** c. 1920's  
**Primary Maker:** Italian  
**Medium:** Point Venise Lace



**Title:** Placemat  
**Date:** c. 1920's  
**Primary Maker:** Italian  
**Medium:** Point Venise Lace



**Title:** Placemat  
**Date:** c. 1920's  
**Primary Maker:** Italian  
**Medium:** Point Venise Lace



**Title:** Placemat  
**Date:** c. 1920's  
**Primary Maker:** Italian  
**Medium:** Point Venise Lace



**Title:** Placemat  
**Date:** c. 1920's  
**Primary Maker:** Italian  
**Medium:** Point Venise Lace



**Title:** Placemat  
**Date:** c. 1920's  
**Primary Maker:** Italian  
**Medium:** Point Venise Lace



**Title:** Placemat  
**Date:** c. 1920's  
**Primary Maker:** Italian  
**Medium:** Point Venise Lace



**Title:** Placemat  
**Date:** c. 1920's  
**Primary Maker:** Italian  
**Medium:** Point Venise Lace



**Title:** Placemat  
**Date:** c. 1920's  
**Primary Maker:** Italian  
**Medium:** Point Venise Lace



**Title:** Placemat  
**Date:** c. 1920's  
**Primary Maker:** Italian  
**Medium:** Point Venise Lace



**Title:** Placemat  
**Date:** c. 1920's  
**Primary Maker:** Italian  
**Medium:** Point Venise Lace



**Title:** Table Runner  
**Date:** c. 1930's  
**Primary Maker:** Italian  
**Medium:** Needle Lace



**Title:** Placemat  
**Date:** c. 1930's  
**Primary Maker:** Italian  
**Medium:** Needle Lace



**Title:** Placemat  
**Date:** c. 1930's  
**Primary Maker:** Italian  
**Medium:** Needle Lace



**Title:** Placemat  
**Date:** c. 1930's  
**Primary Maker:** Italian  
**Medium:** Needle Lace



**Title:** Placemat  
**Date:** c. 1930's  
**Primary Maker:** Italian  
**Medium:** Needle Lace



**Title:** Placemat  
**Date:** c. 1930's  
**Primary Maker:** Italian  
**Medium:** Needle Lace



**Title:** Placemat  
**Date:** c. 1930's  
**Primary Maker:** Italian  
**Medium:** Needle Lace



**Title:** Placemat  
**Date:** c. 1930's  
**Primary Maker:** Italian  
**Medium:** Needle Lace





**Title: Placemat**  
**Date:** c. 1930's  
**Primary Maker:** Italian  
**Medium:** Needle Lace



**Title: Placemat**  
**Date:** c. 1930's  
**Primary Maker:** Italian  
**Medium:** Needle Lace



**Title: Placemat**  
**Date:** c. 1930's  
**Primary Maker:** Italian  
**Medium:** Needle Lace



**Title: Placemat**  
**Date:** c. 1930's  
**Primary Maker:** Italian  
**Medium:** Needle Lace



**Title: Placemat**  
**Date:** c. 1930's  
**Primary Maker:** Italian  
**Medium:** Needle Lace



**Title: Napkin**  
**Date:** c. 1930's  
**Primary Maker:** Italian  
**Medium:** Needle Lace



**Title: Napkin**  
**Date:** c. 1930's  
**Primary Maker:** Italian  
**Medium:** Needle Lace



**Title: Napkin**  
**Date:** c. 1930's  
**Primary Maker:** Italian  
**Medium:** Needle Lace



**Title: Napkin**  
**Date:** c. 1930's  
**Primary Maker:** Italian  
**Medium:** Needle Lace



**Title:** Napkin  
**Date:** c. 1930's  
**Primary Maker:** Italian  
**Medium:** Needle Lace



**Title:** Napkin  
**Date:** c. 1930's  
**Primary Maker:** Italian  
**Medium:** Needle Lace



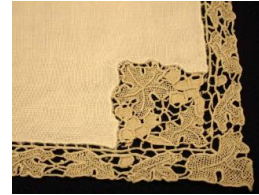
**Title:** Napkin  
**Date:** c. 1930's  
**Primary Maker:** Italian  
**Medium:** Needle Lace



**Title:** Napkin  
**Date:** c. 1930's  
**Primary Maker:** Italian  
**Medium:** Needle Lace



**Title:** Napkin  
**Date:** c. 1930's  
**Primary Maker:** Italian  
**Medium:** Needle Lace



**Title:** Napkin  
**Date:** c. 1930's  
**Primary Maker:** Italian  
**Medium:** Needle Lace



**Title:** Napkin  
**Date:** c. 1930's  
**Primary Maker:** Italian  
**Medium:** Needle Lace



**Title:** Napkin  
**Date:** c. 1930's  
**Primary Maker:** Italian  
**Medium:** Needle Lace



**Title:** Table Runner  
**Date:** c. 1930's  
**Primary Maker:** Portuguese  
**Medium:** Organdy



**Title: Placemat**  
**Date:** c. 1930's  
**Primary Maker:** Philippino  
**Medium:** Organdy



**Title: Placemat**  
**Date:** c. 1930's  
**Primary Maker:** Philippino  
**Medium:** Organdy



**Title: Placemat**  
**Date:** c. 1930's  
**Primary Maker:** Philippino  
**Medium:** Organdy



**Title: Placemat**  
**Date:** c. 1930's  
**Primary Maker:** Philippino  
**Medium:** Organdy



**Title: Placemat**  
**Date:** c. 1930's  
**Primary Maker:** Philippino  
**Medium:** Organdy



**Title: Placemat**  
**Date:** c. 1930's  
**Primary Maker:** Philippino  
**Medium:** Organdy



**Title: Placemat**  
**Date:** c. 1930's  
**Primary Maker:** Philippino  
**Medium:** Organdy



**Title: Placemat**  
**Date:** c. 1930's  
**Primary Maker:** Philippino  
**Medium:** Organdy



**Title: Napkin**  
**Date:** c. 1930's  
**Primary Maker:** Philippino  
**Medium:** Organdy



**Title:** Napkin  
**Date:** c. 1930's  
**Primary Maker:** Philippino  
**Medium:** Organdy



**Title:** Napkin  
**Date:** c. 1930's  
**Primary Maker:** Philippino  
**Medium:** Organdy



**Title:** Napkin  
**Date:** c. 1930's  
**Primary Maker:** Philippino  
**Medium:** Organdy



**Title:** Napkin  
**Date:** c. 1930's  
**Primary Maker:** Philippino  
**Medium:** Organdy



**Title:** Napkin  
**Date:** c. 1930's  
**Primary Maker:** Philippino  
**Medium:** Organdy



**Title:** Napkin  
**Date:** c. 1930's  
**Primary Maker:** Philippino  
**Medium:** Organdy



**Title:** Napkin  
**Date:** c. 1930's  
**Primary Maker:** Philippino  
**Medium:** Organdy



**Title:** Table Runner  
**Date:** c. 1930's  
**Primary Maker:** Philippino  
**Medium:** Linen, hand-embroidered



**Title:** Placemat  
**Date:** c. 1930's  
**Primary Maker:** Philippino  
**Medium:** Linen, hand-embroidered





**Title:** Placemat  
**Date:** c. 1930's  
**Primary Maker:** Philippino  
**Medium:** Linen, hand-embroidered



**Title:** Placemat  
**Date:** c. 1930's  
**Primary Maker:** Philippino  
**Medium:** Linen, hand-embroidered



**Title:** Placemat  
**Date:** c. 1930's  
**Primary Maker:** Philippino  
**Medium:** Linen, hand-embroidered



**Title:** Placemat  
**Date:** c. 1930's  
**Primary Maker:** Philippino  
**Medium:** Linen, hand-embroidered



**Title:** Placemat  
**Date:** c. 1930's  
**Primary Maker:** Philippino  
**Medium:** Linen, hand-embroidered



**Title:** Placemat  
**Date:** c. 1930's  
**Primary Maker:** Philippino  
**Medium:** Linen, hand-embroidered



**Title:** Placemat  
**Date:** c. 1930's  
**Primary Maker:** Philippino  
**Medium:** Linen, hand-embroidered



**Title:** Napkin  
**Date:** c. 1930's  
**Primary Maker:** Philippino  
**Medium:** Linen, hand-embroidered



**Title:** Napkin  
**Date:** c. 1930's  
**Primary Maker:** Philippino  
**Medium:** Linen, hand-embroidered



**Title:** Napkin  
**Date:** c. 1930's  
**Primary Maker:** Philippino  
**Medium:** Linen, hand-embroidered



**Title:** Napkin  
**Date:** c. 1930's  
**Primary Maker:** Philippino  
**Medium:** Linen, hand-embroidered



**Title:** Napkin  
**Date:** c. 1930's  
**Primary Maker:** Philippino  
**Medium:** Linen, hand-embroidered



**Title:** Napkin  
**Date:** c. 1930's  
**Primary Maker:** Philippino  
**Medium:** Linen, hand-embroidered



**Title:** Napkin  
**Date:** c. 1930's  
**Primary Maker:** Philippino  
**Medium:** Linen, hand-embroidered



**Title:** Napkin  
**Date:** c. 1930's  
**Primary Maker:** Philippino  
**Medium:** Linen, hand-embroidered



**Title:** Napkin  
**Date:** c. 1930's  
**Primary Maker:** Philippino  
**Medium:** Linen, hand-embroidered



**Title:** Napkin  
**Date:** c. 1930's  
**Primary Maker:** Philippino  
**Medium:** Linen, hand-embroidered



**Title:** Table Runner  
**Date:** c. 1930's  
**Primary Maker:** Italian  
**Medium:** Linen, lace



**Title:** Table Cloth  
**Date:** c. 1950's  
**Primary Maker:** Philippino  
**Medium:** Salmon colored  
Margandie



**Title:** Napkin  
**Date:** c. 1950's  
**Primary Maker:** Philippino  
**Medium:** Salmon colored  
Margandie



**Title:** Napkin  
**Date:** c. 1950's  
**Primary Maker:** Philippino  
**Medium:** Salmon colored  
Margandie



**Title:** Napkin  
**Date:** c. 1950's  
**Primary Maker:** Philippino  
**Medium:** Salmon colored  
Margandie



**Title:** Napkin  
**Date:** c. 1950's  
**Primary Maker:** Philippino  
**Medium:** Salmon colored  
Margandie



**Title:** Napkin  
**Date:** c. 1950's  
**Primary Maker:** Philippino  
**Medium:** Salmon colored  
Margandie



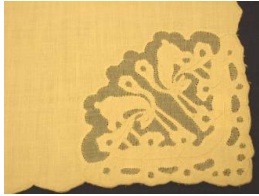
**Title:** Napkin  
**Date:** c. 1950's  
**Primary Maker:** Philippino  
**Medium:** Salmon colored  
Margandie



**Title:** Tablecloth  
**Date:** c. 1950's  
**Medium:** Ecru colored  
Margandie



**Title:** Napkin  
**Date:** c. 1950's  
**Primary Maker:** Philippino  
**Medium:** Ecru colored  
Margandie



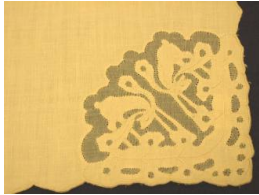
**Title:** Napkin  
**Date:** c. 1950's  
**Primary Maker:** Philippino  
**Medium:** Ecru colored  
Margandie



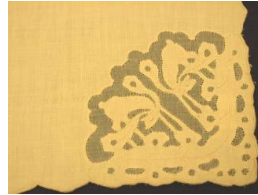
**Title:** Napkin  
**Date:** c. 1950's  
**Primary Maker:** Philippino  
**Medium:** Ecru colored  
Margandie



**Title:** Napkin  
**Date:** c. 1950's  
**Primary Maker:** Philippino  
**Medium:** Ecru colored  
Margandie



**Title:** Napkin  
**Date:** c. 1950's  
**Primary Maker:** Philippino  
**Medium:** Ecru colored  
Margandie



**Title:** Napkin  
**Date:** c. 1950's  
**Primary Maker:** Philippino  
**Medium:** Ecru colored  
Margandie



**Title:** Finger Napkin  
**Date:** c. 1950's  
**Primary Maker:** Philippino  
**Medium:** Linen



**Title:** Finger Napkin  
**Date:** c. 1950's  
**Primary Maker:** Philippino  
**Medium:** Linen



**Title:** Finger Napkin  
**Date:** c. 1950's  
**Primary Maker:** Philippino  
**Medium:** Linen



**Title:** Finger Napkin  
**Date:** c. 1950's  
**Primary Maker:** Philippino  
**Medium:** Linen





**Title:** Finger Napkin  
**Date:** c. 1950's  
**Primary Maker:** Philippino  
**Medium:** Linen



**Title:** Finger Napkin  
**Date:** c. 1950's  
**Primary Maker:** Philippino  
**Medium:** Linen



**Title:** Finger Napkin  
**Date:** c. 1950's  
**Primary Maker:** Philippino  
**Medium:** Linen



**Title:** Finger Napkin  
**Date:** c. 1950's  
**Primary Maker:** Philippino  
**Medium:** Linen



**Title:** Table Runner  
**Date:** c. 1940'S  
**Primary Maker:** Italian  
**Medium:** Embroidered pink linen



**Title:** Placemat  
**Date:** c. 1940'S  
**Primary Maker:** Italian  
**Medium:** Embroidered pink linen



**Title:** Placemat  
**Date:** c. 1940'S  
**Primary Maker:** Italian  
**Medium:** Embroidered pink linen



**Title:** Placemat  
**Date:** c. 1940'S  
**Primary Maker:** Italian  
**Medium:** Embroidered pink linen



**Title:** Placemat  
**Date:** c. 1940'S  
**Primary Maker:** Italian  
**Medium:** Embroidered pink linen



**Title:** Placemat  
**Date:** c. 1940'S  
**Primary Maker:** Italian  
**Medium:** Embroidered pink  
linen



**Title:** Placemat  
**Date:** c. 1940'S  
**Primary Maker:** Italian  
**Medium:** Embroidered pink  
linen



**Title:** Placemat  
**Date:** c. 1940'S  
**Primary Maker:** Italian  
**Medium:** Embroidered pink  
linen



**Title:** Placemat  
**Date:** c. 1940'S  
**Primary Maker:** Italian  
**Medium:** Embroidered pink  
linen



**Title:** Napkin  
**Date:** c. 1940'S  
**Primary Maker:** Italian  
**Medium:** Embroidered pink  
linen



**Title:** Napkin  
**Date:** c. 1940'S  
**Primary Maker:** Italian  
**Medium:** Embroidered pink  
linen



**Title:** Napkin  
**Date:** c. 1940'S  
**Primary Maker:** Italian  
**Medium:** Embroidered pink  
linen



**Title:** Napkin  
**Date:** c. 1940'S  
**Primary Maker:** Italian  
**Medium:** Embroidered pink  
linen



**Title:** Napkin  
**Date:** c. 1940'S  
**Primary Maker:** Italian  
**Medium:** Embroidered pink  
linen



**Title:** Napkin  
**Date:** c. 1940'S  
**Primary Maker:** Italian  
**Medium:** Embroidered pink linen



**Title:** Napkin  
**Date:** c. 1940'S  
**Primary Maker:** Italian  
**Medium:** Embroidered pink linen



**Title:** Napkin  
**Date:** c. 1940'S  
**Primary Maker:** Italian  
**Medium:** Embroidered pink linen



**Title:** Table Runner  
**Date:** c. 1950's  
**Primary Maker:** Portuguese  
**Medium:** Embroidered ecru linen



**Title:** Placemat  
**Date:** c. 1950's  
**Primary Maker:** Portuguese  
**Medium:** Embroidered ecru linen



**Title:** Placemat  
**Date:** c. 1950's  
**Primary Maker:** Portuguese  
**Medium:** Embroidered ecru linen



**Title:** Placemat  
**Date:** c. 1950's  
**Primary Maker:** Portuguese  
**Medium:** Embroidered ecru linen



**Title:** Placemat  
**Date:** c. 1950's  
**Primary Maker:** Portuguese  
**Medium:** Embroidered ecru linen



**Title:** Placemat  
**Date:** c. 1950's  
**Primary Maker:** Portuguese  
**Medium:** Embroidered ecru linen



**Title:** Placemat  
**Date:** c. 1950's  
**Primary Maker:** Portuguese  
**Medium:** Emboridered ecru  
linen



**Title:** Placemat  
**Date:** c. 1950's  
**Primary Maker:** Portuguese  
**Medium:** Emboridered ecru  
linen



**Title:** Placemat  
**Date:** c. 1950's  
**Primary Maker:** Portuguese  
**Medium:** Emboridered ecru  
linen



**Title:** Placemat  
**Date:** c. 1950's  
**Primary Maker:** Portuguese  
**Medium:** Emboridered ecru  
linen



**Title:** Placemat  
**Date:** c. 1950's  
**Primary Maker:** Portuguese  
**Medium:** Emboridered ecru  
linen



**Title:** Placemat  
**Date:** c. 1950's  
**Primary Maker:** Portuguese  
**Medium:** Emboridered ecru  
linen



**Title:** Placemat  
**Date:** c. 1950's  
**Primary Maker:** Portuguese  
**Medium:** Emboridered ecru  
linen



**Title:** Napkin  
**Date:** c. 1950's  
**Primary Maker:** Portuguese  
**Medium:** Emboridered ecru  
linen



**Title:** Napkin  
**Date:** c. 1950's  
**Primary Maker:** Portuguese  
**Medium:** Emboridered ecru  
linen





**Title:** Napkin  
**Date:** c. 1950's  
**Primary Maker:** Portuguese  
**Medium:** Emboridered ecru  
linen



**Title:** Napkin  
**Date:** c. 1950's  
**Primary Maker:** Portuguese  
**Medium:** Emboridered ecru  
linen



**Title:** Napkin  
**Date:** c. 1950's  
**Primary Maker:** Portuguese  
**Medium:** Emboridered ecru  
linen



**Title:** Napkin  
**Date:** c. 1950's  
**Primary Maker:** Portuguese  
**Medium:** Emboridered ecru  
linen



**Title:** Napkin  
**Date:** c. 1950's  
**Primary Maker:** Portuguese  
**Medium:** Emboridered ecru  
linen



**Title:** Napkin  
**Date:** c. 1950's  
**Primary Maker:** Portuguese  
**Medium:** Emboridered ecru  
linen



**Title:** Napkin  
**Date:** c. 1950's  
**Primary Maker:** Portuguese  
**Medium:** Emboridered ecru  
linen



**Title:** Napkin  
**Date:** c. 1950's  
**Primary Maker:** Portuguese  
**Medium:** Emboridered ecru  
linen



**Title:** Napkin  
**Date:** c. 1950's  
**Primary Maker:** Portuguese  
**Medium:** Emboridered ecru  
linen



**Title:** Napkin  
**Date:** c. 1950's  
**Primary Maker:** Portuguese  
**Medium:** Emboridered ecru  
linen



**Title:** Tray Cover  
**Date:** c. 1950's  
**Medium:** Handmade  
Bobbin Lace



**Title:** Doily  
**Date:** c. 1940's  
**Primary Maker:** Irish  
**Medium:** White linen with  
trim



**Title:** Doily  
**Date:** c. 1940's  
**Primary Maker:** Irish  
**Medium:** White linen with  
trim



**Title:** Doily  
**Date:** c. 1940's  
**Primary Maker:** Irish  
**Medium:** White linen with  
trim



**Title:** Doily  
**Date:** c. 1940's  
**Primary Maker:** Irish  
**Medium:** White linen with  
trim



**Title:** Doily  
**Date:** c. 1940's  
**Primary Maker:** Irish  
**Medium:** White linen with  
trim



**Title:** Doily  
**Date:** c. 1940's  
**Primary Maker:** Irish  
**Medium:** White linen with  
trim



**Title:** Doily  
**Date:** c. 1940's  
**Primary Maker:** Irish  
**Medium:** White linen with  
trim



**Title: Doily**  
**Date:** c. 1940's  
**Primary Maker:** Irish  
**Medium:** White linen with trim



**Title: Doily**  
**Date:** c. 1940's  
**Primary Maker:** Irish  
**Medium:** White linen with trim



**Title: Doily**  
**Date:** c. 1940's  
**Primary Maker:** Irish  
**Medium:** White linen with trim



**Title: Doily**  
**Date:** c. 1940's  
**Primary Maker:** Irish  
**Medium:** White linen with trim



**Title: Doily**  
**Date:** c. 1940's  
**Primary Maker:** Irish  
**Medium:** White linen with trim



**Title: Doily**  
**Date:** c. 1940's  
**Primary Maker:** Irish  
**Medium:** White linen with trim



**Title: Doiley**  
**Date:** c. 1920's  
**Medium:** Handmade  
Bobbin Lace



**Title: Table Runner**  
**Date:** c. 1950's  
**Primary Maker:** Portuguese  
**Medium:** White Margandie  
cotton



**Title: Napkin**  
**Date:** c. 1950's  
**Primary Maker:** Portuguese  
**Medium:** White Margandie  
cotton



**Title:** Napkin  
**Date:** c. 1950's  
**Primary Maker:** Portuguese  
**Medium:** White Margandie cotton



**Title:** Doily  
**Date:** c. 1950's  
**Primary Maker:** Philippino  
**Medium:** Embroidered white linen



**Title:** Doily  
**Date:** c. 1950's  
**Primary Maker:** Philippino  
**Medium:** Embroidered white linen



**Title:** Doily  
**Date:** c. 1950's  
**Primary Maker:** Philippino  
**Medium:** Embroidered white linen



**Title:** Doily  
**Date:** c. 1950's  
**Primary Maker:** Philippino  
**Medium:** Embroidered white linen



**Title:** Doily  
**Date:** c. 1950's  
**Primary Maker:** Philippino  
**Medium:** Embroidered white linen



**Title:** Doily  
**Date:** c. 1950's  
**Primary Maker:** Philippino  
**Medium:** Embroidered white linen



**Title:** Doily  
**Date:** c. 1950's  
**Primary Maker:** Philippino  
**Medium:** Embroidered white linen



**Title:** Doily  
**Date:** c. 1950's  
**Primary Maker:** Philippino  
**Medium:** Embroidered white linen





**Title:** Doily  
**Date:** c. 1950's  
**Primary Maker:** Philippino  
**Medium:** Embroidered white linen



**Title:** Doily  
**Date:** c. 1950's  
**Primary Maker:** Philippino  
**Medium:** Embroidered white linen



**Title:** Doily  
**Date:** c. 1950's  
**Primary Maker:** Philippino  
**Medium:** Embroidered white linen



**Title:** Table Cloth  
**Date:** c. 1920's  
**Primary Maker:** Belgian  
**Medium:** White linen and bobbin lace



**Title:** Napkin  
**Date:** c. 1920's  
**Primary Maker:** Belgian  
**Medium:** White linen and bobbin lace



**Title:** Napkin  
**Date:** c. 1920's  
**Primary Maker:** Belgian  
**Medium:** White linen and bobbin lace



**Title:** Napkin  
**Date:** c. 1920's  
**Primary Maker:** Belgian  
**Medium:** White linen and bobbin lace



**Title:** Napkin  
**Date:** c. 1920's  
**Primary Maker:** Belgian  
**Medium:** White linen and bobbin lace



**Title:** Napkin  
**Date:** c. 1920's  
**Primary Maker:** Belgian  
**Medium:** White linen and bobbin lace



**Title:** Napkin  
**Date:** c. 1920's  
**Primary Maker:** Belgian  
**Medium:** White linen and bobbin lace



**Title:** Napkin  
**Date:** c. 1920's  
**Primary Maker:** Belgian  
**Medium:** White linen and bobbin lace



**Title:** Napkin  
**Date:** c. 1920's  
**Primary Maker:** Belgian  
**Medium:** White linen and bobbin lace



**Title:** Napkin  
**Date:** c. 1920's  
**Primary Maker:** Belgian  
**Medium:** White linen and bobbin lace



**Title:** Napkin  
**Date:** c. 1920's  
**Primary Maker:** Belgian  
**Medium:** White linen and bobbin lace



**Title:** Napkin  
**Date:** c. 1920's  
**Primary Maker:** Belgian  
**Medium:** White linen and bobbin lace



**Title:** Napkin  
**Date:** c. 1920's  
**Primary Maker:** Belgian  
**Medium:** White linen and bobbin lace



**Title:** Tablecloth  
**Date:** c. 1920's  
**Primary Maker:** Belgian  
**Medium:** Needle, bobbin lace



**Title:** Tray Mat  
**Date:** c. 1930's  
**Medium:** White Linen



**Title:** Napkin  
**Date:** c. 1930's  
**Medium:** White Linen



**Title:** Table Runner, 8  
Placemats, and 8  
Napkins  
**Date:** c. 1930'S  
**Medium:** Linen



**Title:** Table Runner  
**Date:** c. 1950's  
**Primary Maker:** Italian  
**Medium:** Linen



**Title:** Placemat  
**Date:** c. 1950's  
**Primary Maker:** Italian  
**Medium:** Linen



**Title:** Placemat  
**Date:** c. 1950's  
**Primary Maker:** Italian  
**Medium:** Linen



**Title:** Placemat  
**Date:** c. 1950's  
**Primary Maker:** Italian  
**Medium:** Linen



**Title:** Placemat  
**Date:** c. 1950's  
**Primary Maker:** Italian  
**Medium:** Linen



**Title:** Placemat  
**Date:** c. 1950's  
**Primary Maker:** Italian  
**Medium:** Linen



**Title:** Placemat  
**Date:** c. 1950's  
**Primary Maker:** Italian  
**Medium:** Linen



**Title: Placemat**  
**Date:** c. 1950's  
**Primary Maker:** Italian  
**Medium:** Linen



**Title: Placemat**  
**Date:** c. 1950's  
**Primary Maker:** Italian  
**Medium:** Linen



**Title: Napkin**  
**Date:** c. 1950's  
**Primary Maker:** Italian  
**Medium:** Linen



**Title: Napkin**  
**Date:** c. 1950's  
**Primary Maker:** Italian  
**Medium:** Linen



**Title: Napkin**  
**Date:** c. 1950's  
**Primary Maker:** Italian  
**Medium:** Linen



**Title: Napkin**  
**Date:** c. 1950's  
**Primary Maker:** Italian  
**Medium:** Linen



**Title: Napkin**  
**Date:** c. 1950's  
**Primary Maker:** Italian  
**Medium:** Linen



**Title: Napkin**  
**Date:** c. 1950's  
**Primary Maker:** Italian  
**Medium:** Linen



**Title: Napkin**  
**Date:** c. 1950's  
**Primary Maker:** Italian  
**Medium:** Linen





**Title:** Napkin  
**Date:** c. 1950's  
**Primary Maker:** Italian  
**Medium:** Linen



**Title:** Finger Napkin  
**Date:** c. 1950's  
**Primary Maker:** Italian  
**Medium:** Linen



**Title:** Finger Napkin  
**Date:** c. 1950's  
**Primary Maker:** Italian  
**Medium:** Linen



**Title:** Finger Napkin  
**Date:** c. 1950's  
**Primary Maker:** Italian  
**Medium:** Linen



**Title:** Finger Napkin  
**Date:** c. 1950's  
**Primary Maker:** Italian  
**Medium:** Linen



**Title:** Finger Napkin  
**Date:** c. 1950's  
**Primary Maker:** Italian  
**Medium:** Linen



**Title:** Finger Napkin  
**Date:** c. 1950's  
**Primary Maker:** Italian  
**Medium:** Linen



**Title:** Finger Napkin  
**Date:** c. 1950's  
**Primary Maker:** Italian  
**Medium:** Linen



**Title:** Finger Napkin  
**Date:** c. 1950's  
**Primary Maker:** Italian  
**Medium:** Linen



**Title:** Tablecloth  
**Date:** c. 1930's  
**Primary Maker:** Italian  
**Medium:** Linen



**Title:** Napkin  
**Date:** c. 1930's  
**Primary Maker:** Italian  
**Medium:** Linen



**Title:** Napkin  
**Date:** c. 1930's  
**Primary Maker:** Italian  
**Medium:** Linen



**Title:** Napkin  
**Date:** c. 1930's  
**Primary Maker:** Italian  
**Medium:** Linen



**Title:** Napkin  
**Date:** c. 1930's  
**Primary Maker:** Italian  
**Medium:** Linen



**Title:** Napkin  
**Date:** c. 1930's  
**Primary Maker:** Italian  
**Medium:** Linen



**Title:** Napkin  
**Date:** c. 1930's  
**Primary Maker:** Italian  
**Medium:** Linen



**Title:** Napkin  
**Date:** c. 1930's  
**Primary Maker:** Italian  
**Medium:** Linen



**Title:** Napkin  
**Date:** c. 1930's  
**Primary Maker:** Italian  
**Medium:** Linen



**Title:** Napkin  
**Date:** c. 1930's  
**Primary Maker:** Italian  
**Medium:** Linen



**Title:** Napkin  
**Date:** c. 1930's  
**Primary Maker:** Italian  
**Medium:** Linen



**Title:** Napkin  
**Date:** c. 1930's  
**Primary Maker:** Italian  
**Medium:** Linen



**Title:** Napkin  
**Date:** c. 1930's  
**Primary Maker:** Italian  
**Medium:** Linen



**Title:** Tablecloth, Table Runner, 8 Placemats, and 8 Napkins  
**Date:** c. 1930's  
**Medium:** Lace



**Title:** Table Cloth, One of a Pair  
**Date:** c. 1950's  
**Medium:** Cotton organdy



**Title:** Table Cloth, One of a Pair  
**Date:** c. 1950's  
**Medium:** Cotton organdy



**Title:** Table Runner  
**Date:** c. 1930's  
**Primary Maker:** French  
**Medium:** Linen



**Title:** Table Runner  
**Date:** c. 1930's  
**Primary Maker:** French  
**Medium:** Linen



**Title: Man's Haori**  
**Date:** c. 1930's  
**Primary Maker:** Japanese  
**Medium:** Silk

**Title: Heko Obi**  
**Date:** c. 1930's  
**Medium:** Silk

**Title: Man's Zori (one of a pair)**  
**Date:** c. 1930's  
**Medium:** Black cotton

**Title: Man's Zori (one of a pair)**  
**Date:** c. 1930's  
**Medium:** Black cotton



**Title: Man's Kimono**  
**Date:** c. 1950's  
**Medium:** Cotton



**Title: Table Runner**  
**Date:** c. late 19th century  
**Primary Maker:** Japanese  
**Medium:** Gold ground obi cloth



**Title: Obi Runner**  
**Date:** c. early 20th century  
**Primary Maker:** Japanese  
**Medium:** Brocaded silk



**Title: Obi Runner**  
**Date:** c. early 20th century  
**Primary Maker:** Japanese  
**Medium:** Brocaded silk



**Title: Obi Runner**  
**Date:** c. early 20th century  
**Primary Maker:** Japanese  
**Medium:** Brocaded silk





**Title: Woman's Kimono**  
**Date:** Early 20th century  
**Primary Maker:** Japanese  
**Medium:** Silk



**Title: Shawl**  
**Date:** c. 1950's  
**Primary Maker:** Indian  
**Medium:** Brocade



**Title: Scarf**  
**Date:** c. 1960s  
**Primary Maker:** Indian  
**Medium:** Wool



**Title: Shawl**  
**Date:** c. 1960's  
**Primary Maker:** Indian  
**Medium:** Wool



**Title: Stole**  
**Date:** mid 1900s  
**Primary Maker:** Egyptian  
**Medium:** White cotton net



**Title: Selendang**  
**Date:** c. 1920'S  
**Primary Maker:** Indonesian



**Title: Selendang**  
**Date:** c. 1920's  
**Primary Maker:** Indonesian  
**Medium:** Cotton



**Title: Sarong**  
**Date:** c. 1950's  
**Primary Maker:** Javanese



**Title: Coat**  
**Date:** c. early 20th century  
**Primary Maker:** Chinese  
**Medium:** Silk



**Title:** Apron  
**Date:** c. late 19th century  
**Primary Maker:** Chinese  
**Medium:** Silk satin



**Title:** Apron  
**Date:** c. late 19th century  
**Primary Maker:** Chinese  
**Medium:** Silk satin



**Title:** Cap  
**Date:** c. 1950'S  
**Primary Maker:** Chinese  
**Medium:** Black silk satin



**Title:** Cap  
**Date:** c. 1950'S  
**Primary Maker:** Chinese  
**Medium:** Black silk satin



**Title:** Collar  
**Date:** c. early 20th century  
**Medium:** Lace



**Title:** Lace Flower  
**Date:** c. early 20th century  
**Medium:** Needle lace



**Title:** Lace Flower  
**Date:** c. early 20th century  
**Medium:** Needle lace



**Title:** Lace Flower  
**Date:** c. early 20th century  
**Medium:** Needle lace



**Title:** Lace Flower  
**Date:** c. early 20th century  
**Medium:** Needle lace



**Title: Lace Flower**  
**Date:** c. early 20th century  
**Medium:** Needle lace



**Title: Lace Butterfly**  
**Date:** c. early 20th century  
**Medium:** Needle lace



**Title: Lace Butterfly**  
**Date:** c. early 20th century  
**Medium:** Needle lace



**Title: Lace Butterfly**  
**Date:** c. early 20th century  
**Medium:** Needle lace



**Title: Lace Butterfly**  
**Date:** c. early 20th century  
**Medium:** Needle lace



**Title: Lace Butterfly**  
**Date:** c. early 20th century  
**Medium:** Needle lace



**Title: Sampler**  
**Date:** 1825  
**Primary Maker:** Catharine  
Sophia Van Horne  
**Medium:** Silk on linen



**Title: Sampler**  
**Date:** 1827  
**Primary Maker:** Julia Ann  
Forbs  
**Medium:** Silk on linen



**Title: Kesi wall hanging**  
**Date:** 18th century  
**Primary Maker:** Chinese  
**Medium:** Silk kesi





**Title:** Woman's Cap  
**Date:** c.1820-1830  
**Primary Maker:** American  
**Medium:** Tambour White Embroidery In Flower And Leaf Design On White Cotton; Lace Edging



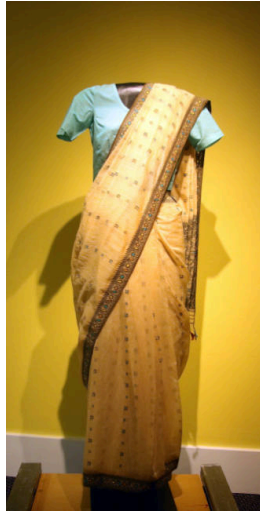
**Title:** Stole  
**Primary Maker:** Egyptian  
**Medium:** Cotton



**Title:** Paisley Shawl  
**Date:** c.1860-1870  
**Primary Maker:** Scottish  
**Medium:** Wool



**Title:** Sari  
**Date:** c. 1957-1958  
**Primary Maker:** Indian  
**Medium:** Gold silk and cotton



**Title:** Sari  
**Date:** c. 1960  
**Primary Maker:** Indian  
**Medium:** Cotton, woven brocade



**Title:** Sari  
**Date:** c. 1957-1958  
**Primary Maker:** Indian  
**Medium:** Silk



**Title:** Sari  
**Date:** Mid 20th century  
**Primary Maker:** Indian  
**Medium:** Silk



**Title:** Panel  
**Date:** 20th century  
**Primary Maker:** Japanese  
**Medium:** Embroidery on silk panel



**Title:** Chasuble  
**Date:** 18th century  
**Primary Maker:** French  
**Medium:** Brocaded Silk





**Title: Chalice Cover**

**Date:** 18th century

**Primary Maker:** French

**Medium:** Brocaded Silk



**Title: Wrap**

**Date:** 1998

**Primary Maker:** Gilbert

**"Bobbo" Ahiagble**

**Medium:** Cotton, rayon



**Title: Coverlet**

**Date:** 1770-1780

**Primary Maker:** American

**Medium:** Indigo resist on cotton



**Title: Princess Feather Quilt**

**Date:** c.1850

**Medium:** Applique cotton



**Title: Quilt**

**Date:** c. 1940

**Medium:** Cotton



**Title: Kain Songket**

**Date:** late 19th century

**Primary Maker:** Indonesian

**Medium:** Silk with metallic thread



**Title: Kimono**

**Date:** early 20th century

**Primary Maker:** Japanese

**Medium:** Silk crepe, printed and embroidered designs on red



**Title: Kimono**

**Date:** early 20th century

**Primary Maker:** Japanese

**Medium:** Silk crepe, stencil and painted design on dark blue



**Title: Haori**

**Date:** early 20th century

**Primary Maker:** Japanese

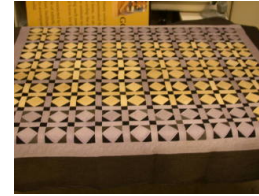
**Medium:** Silk



**Title:** Amish Patchwork Quilt (Purple cross)  
**Date:** late 19th - early 20th century  
**Primary Maker:** Amish  
**Medium:** Cotton sateen



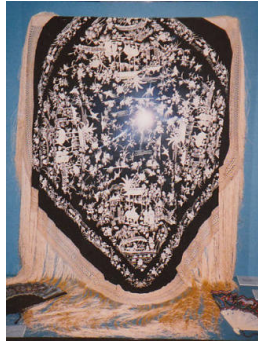
**Title:** Amish Patchwork Quilt (Green and Red stripes)  
**Date:** late 19th - early 20th century  
**Medium:** Cotton



**Title:** Amish Patchwork Quilt (Purple and Cream Squares)  
**Date:** late 19th - early 20th century  
**Medium:** Cotton



**Title:** Amish Patchwork Quilt (Double fan in colors)  
**Date:** late 19th - early 20th century  
**Medium:** Cotton



**Title:** Shawl  
**Date:** mid 19th century  
**Primary Maker:** Chinese  
**Medium:** White embroidery on black silk



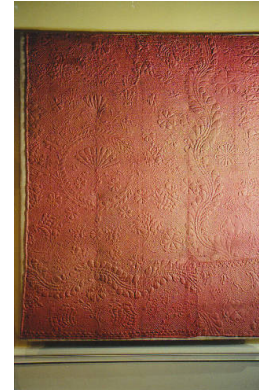
**Title:** Shawl  
**Date:** c. 1860-1870  
**Primary Maker:** European  
**Medium:** Wool



**Title:** Obi  
**Date:** late 19th century  
**Primary Maker:** Japanese  
**Medium:** Silk



**Title:** Kimono  
**Date:** 1980s  
**Primary Maker:** Japanese  
**Medium:** Silk satin, woven design



**Title:** Calimanco Quilt  
**Date:** c. 1780-1785  
**Primary Maker:** Jemima Burt Crane  
**Medium:** Wool cloth, quilted





**Title: Shoulder or Head Cloth**

**Date:** Late 19th century

**Primary Maker:** Minangkabau people

**Medium:** Silk, cotton



**Title: Shoulder or Head Cloth**

**Date:** Late 19th century

**Primary Maker:** Minangkabau people

**Medium:** Cotton, silk



**Title: Jacquard Woven Brocade**

**Date:** 1820-1830

**Primary Maker:** Indian

**Medium:** Silk with metallic thread



**Title: Kain Prada**

**Date:** c. 1940

**Primary Maker:** Balinese

**Medium:** Silk, gold stamp



**Title: Adire Eleko**

**Date:** 1970s

**Primary Maker:** Yoruba people

**Medium:** Starch resist stencil on cotton



**Title: Norwich Shawl**

**Date:** c. 1840-1860

**Primary Maker:** English

**Medium:** Printed design on wool



**Title: Paisley Shawl**

**Date:** c. 1850-1860

**Primary Maker:** Scottish

**Medium:** Wool woven on Jacquard loom



**Title: Mantone de Manilla**

**Date:** Early 20th century

**Primary Maker:** Chinese

**Medium:** Silk crepe with floral design in purple silk thread; embroidered in China, Fringe added in Manilla



**Title: Wall Hanging**

**Primary Maker:** Harriett Howard Bright

**Medium:** Synthetic fiber and wool



**Title:** Tree of Life or Cypress in a Mihrab  
**Date:** Mid to late 18th century  
**Primary Maker:** Indian  
**Medium:** Block print on cotton palampore (or hanging)



**Title:** Palampore Hanging or Cover  
**Date:** Mid to late 18th century  
**Primary Maker:** Indian  
**Medium:** Cotton



**Title:** Crazy Quilt  
**Date:** 1886-1894  
**Primary Maker:** Mary O'Brien  
**Medium:** Silk and velvet patch-work with embroidery



**Title:** Table Cloth  
**Date:** 20th century  
**Primary Maker:** English  
**Medium:** Linen and lace



**Title:** "Gros Point" Table Cloth  
**Date:** 20th century  
**Primary Maker:** Venetian  
**Medium:** Lace



**Title:** Handkerchief  
**Date:** 20th century  
**Primary Maker:** Swiss  
**Medium:** Linen and lace



**Title:** Handkerchief  
**Date:** 20th century  
**Primary Maker:** Czech  
**Medium:** Linen and lace



**Title:** Handkerchief  
**Date:** 1950s  
**Primary Maker:** Chinese  
**Medium:** Embroidery on linen



**Title:** Table Cover  
**Date:** c. 1950's  
**Primary Maker:** Marghab  
**Medium:** Organdy





**Title: Placemat**  
**Date:** c. 1950's  
**Primary Maker:** Marghab  
**Medium:** Organdy



**Title: Placemat**  
**Date:** c. 1950's  
**Primary Maker:** Marghab  
**Medium:** Organdy



**Title: Placemat**  
**Date:** c. 1950's  
**Primary Maker:** Marghab  
**Medium:** Organdy



**Title: Placemat**  
**Date:** c. 1950's  
**Primary Maker:** Marghab  
**Medium:** Organdy



**Title: Placemat**  
**Date:** c. 1950's  
**Primary Maker:** Marghab  
**Medium:** Organdy



**Title: Placemat**  
**Date:** c. 1950's  
**Primary Maker:** Marghab  
**Medium:** Organdy



**Title: Placemat**  
**Date:** c. 1950's  
**Primary Maker:** Marghab  
**Medium:** Organdy



**Title: Placemat**  
**Date:** c. 1950's  
**Primary Maker:** Marghab  
**Medium:** Organdy



**Title: Napkin**  
**Date:** c. 1950's  
**Primary Maker:** Marghab  
**Medium:** Organdy



**Title:** Napkin  
**Date:** c. 1950's  
**Primary Maker:** Marghab  
**Medium:** Organdy



**Title:** Napkin  
**Date:** c. 1950's  
**Primary Maker:** Marghab  
**Medium:** Organdy



**Title:** Napkin  
**Date:** c. 1950's  
**Primary Maker:** Marghab  
**Medium:** Organdy



**Title:** Napkin  
**Date:** c. 1950's  
**Primary Maker:** Marghab  
**Medium:** Organdy



**Title:** Napkin  
**Date:** c. 1950's  
**Primary Maker:** Marghab  
**Medium:** Organdy



**Title:** Napkin  
**Date:** c. 1950's  
**Primary Maker:** Marghab  
**Medium:** Organdy



**Title:** Napkin  
**Date:** c. 1950's  
**Primary Maker:** Marghab  
**Medium:** Organdy



**Title:** Placemat  
**Date:** c. 1920's  
**Primary Maker:** Marghab  
**Medium:** Linen



**Title:** Placemat  
**Date:** c. 1950's  
**Primary Maker:** Marghab  
**Medium:** Linen



**Title:** Placemat  
**Date:** c. 1950's  
**Primary Maker:** Marghab  
**Medium:** Linen



**Title:** Placemat  
**Date:** c. 1950's  
**Primary Maker:** Marghab  
**Medium:** Linen



**Title:** Placemat  
**Date:** c. 1950's  
**Primary Maker:** Marghab  
**Medium:** Linen



**Title:** Placemat  
**Date:** c. 1950's  
**Primary Maker:** Marghab  
**Medium:** Linen



**Title:** Placemat  
**Date:** c. 1950's  
**Primary Maker:** Marghab  
**Medium:** Linen



**Title:** Placemat  
**Date:** c. 1950's  
**Primary Maker:** Marghab  
**Medium:** Linen



**Title:** Placemat  
**Date:** c. 1950's  
**Primary Maker:** Marghab  
**Medium:** Linen



**Title:** Placemat  
**Date:** c. 1950's  
**Primary Maker:** Marghab  
**Medium:** Linen



**Title:** Placemat  
**Date:** c. 1950's  
**Primary Maker:** Marghab  
**Medium:** Linen



**Title:** Placemat  
**Date:** c. 1950's  
**Primary Maker:** Marghab  
**Medium:** Linen



**Title:** Napkin  
**Date:** c. 1950's  
**Primary Maker:** Marghab  
**Medium:** Linen



**Title:** Napkin  
**Date:** c. 1950's  
**Primary Maker:** Marghab  
**Medium:** Linen



**Title:** Napkin  
**Date:** c. 1950's  
**Primary Maker:** Marghab  
**Medium:** Linen



**Title:** Napkin  
**Date:** c. 1950's  
**Primary Maker:** Marghab  
**Medium:** Linen



**Title:** Napkin  
**Date:** c. 1950's  
**Primary Maker:** Marghab  
**Medium:** Linen



**Title:** Napkin  
**Date:** c. 1950's  
**Primary Maker:** Marghab  
**Medium:** Linen



**Title:** Napkin  
**Date:** c. 1950's  
**Primary Maker:** Marghab  
**Medium:** Linen



**Title:** Napkin  
**Date:** c. 1950's  
**Primary Maker:** Marghab  
**Medium:** Linen





**Title:** Napkin  
**Date:** c. 1950's  
**Primary Maker:** Marghab  
**Medium:** Linen



**Title:** Napkin  
**Date:** c. 1950's  
**Primary Maker:** Marghab  
**Medium:** Linen



**Title:** Napkin  
**Date:** c. 1950's  
**Primary Maker:** Marghab  
**Medium:** Linen



**Title:** Napkin  
**Date:** c. 1950's  
**Primary Maker:** Marghab  
**Medium:** Linen



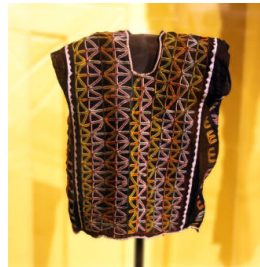
**Title:** Bamboo Blind  
with Floral Design  
**Date:** 20th century  
**Primary Maker:** Korean  
**Medium:** Bamboo strips,  
threads, fabric and metal  
fittings



**Title:** Bamboo Blind  
with Floral Design  
**Date:** 20th century  
**Primary Maker:** Korean  
**Medium:** Bamboo strips,  
threads, fabric and metal  
fittings



**Title:** Man's Tunic  
**Primary Maker:** Wodaabe  
people  
**Medium:** Chainstich  
embroidery on dark blue  
tape of cotton



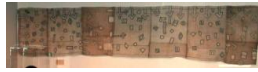
**Title:** Child's Tunic  
**Primary Maker:** Wodaabe  
people  
**Medium:** Chainstich  
embroidery on black dyed  
tape of cotton



**Title:** Woman's Skirt  
**Primary Maker:** Wodaabe  
people  
**Medium:** Cotton with  
applique and chain stitch  
embroidery.



**Title:** Bushoong Skirt  
**Date:** 20th century  
**Primary Maker:** Kuba / Bushoong people  
**Medium:** Raffia, squares of Kuba cloth, tie-dye



**Title:** Woman's Skirt  
**Primary Maker:** Kuba people  
**Medium:** Raffia, dye with embroidered designs



**Title:** Greek Heritage  
**Date:** 1982  
**Primary Maker:** Mary Borkowski  
**Medium:** Cotton wall hanging with applique and embroidery



**Title:** Small Raffia Textile  
**Date:** 20th century  
**Medium:** Raffia



**Title:** Small Raffia Textile  
**Date:** 20th century  
**Medium:** Raffia



**Title:** Small Raffia Textile  
**Date:** 20th century  
**Medium:** Raffia



**Title:** Tablecloth  
**Date:** c. 1930s  
**Primary Maker:** Mbuun people  
**Medium:** Raffia



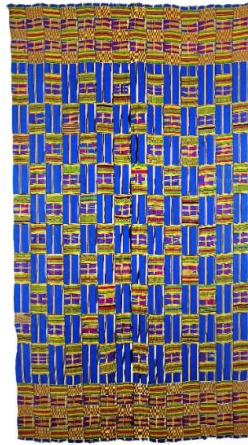
**Title:** Winter Princess Robe  
**Date:** Late 19th century  
**Primary Maker:** Chinese  
**Medium:** Silk brocade with fur lining



**Title:** Imperial Summer Robe  
**Date:** Late 19th century  
**Primary Maker:** Chinese  
**Medium:** Blue gauze silk with embroidery in gold thread



**Title:** We are One, or Mother of Us All  
**Date:** 1991  
**Primary Maker:** Mary Borkowski  
**Medium:** Fabric, thread, embroidery, quilting



**Title:** Kente Cloth  
**Date:** 20th century  
**Primary Maker:** Asante people  
**Medium:** Cotton, silk, dye



**Title:** Adinkra Cloth  
**Date:** 20th century  
**Primary Maker:** Asante people  
**Medium:** Cotton, dye



**Title:** Robe  
**Date:** late 19th century  
**Primary Maker:** Chinese  
**Medium:** Silk, silk floss embroidery



**Title:** Embroidered Panel  
**Date:** early 20th century  
**Primary Maker:** Turkmen  
**Medium:** Wool flannel with embroidery



**Title:** Embroidered Panel  
**Date:** early 20th century  
**Primary Maker:** Chinese  
**Medium:** Linen with embroidery



**Title:** Shawl  
**Date:** 1840-60  
**Primary Maker:** Chinese  
**Medium:** Silk with fringe



**Title:** Quilt Top  
**Date:** 1870-1900  
**Primary Maker:** Scottish  
**Medium:** Cotton



**Title:** Embroidered Textile  
**Date:** 1980  
**Primary Maker:** (Yao) Mien people  
**Medium:** Cotton, embroidery





**Title:** Kimono  
**Date:** 1930  
**Primary Maker:** Japanese  
**Medium:** Screenprint on silk



**Title:** Kimono  
**Date:** 1930  
**Primary Maker:** Japanese  
**Medium:** Screenprint on silk



**Title:** Kimono  
**Date:** 1930  
**Primary Maker:** Japanese  
**Medium:** Screenprint on silk



**Title:** Kimono  
**Date:** 1930  
**Primary Maker:** Japanese  
**Medium:** Screenprint on silk



**Title:** Kimono  
**Date:** 1930  
**Primary Maker:** Japanese  
**Medium:** Screenprint on silk



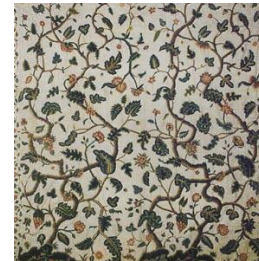
**Title:** Kimono  
**Date:** 1930  
**Primary Maker:** Japanese  
**Medium:** Screen print on silk



**Title:** Embroidery  
**Date:** Late 19th century  
**Primary Maker:** Chinese  
**Medium:** Silk-floss embroidery on silk



**Title:** Embroidery  
**Date:** Late 19th century  
**Primary Maker:** Chinese  
**Medium:** Silk-floss embroidery on silk



**Title:** Bed Curtain  
**Date:** 1712  
**Primary Maker:** English  
**Medium:** Linen/cotton ground, wool embroidery.





**Title:** Ikat Panel  
**Date:** 1950-1970  
**Primary Maker:** Uygur people  
**Medium:** Resist dyed silk



**Title:** Ikat Panel  
**Date:** Mid 20th century  
**Primary Maker:** Uzbek  
**Medium:** Warp dyed silk



**Title:** Head Scarf  
**Date:** Mid 20th century  
**Primary Maker:** Pakistani  
**Medium:** Cotton and silk floss embroidery



**Title:** Woman's Shawl  
**Date:** Mid 20th century  
**Primary Maker:** Pakistani  
**Medium:** Cotton and silk floss embroidery



**Title:** Siapi Tapa  
**Date:** c. 1943-44  
**Primary Maker:** Polynesian  
**Medium:** Paper mulberry bark, hand painted



**Title:** Quilt  
**Date:** 1810-1830  
**Primary Maker:** Irish  
**Medium:** Cotton, applique, embroidery



**Title:** Colonial Williamsburg  
**Date:** c. 1932-1934  
**Primary Maker:** Helen Pinkney  
**Medium:** Acetate, airbrush



**Title:** Sailboats  
**Date:** c. 1932-34  
**Primary Maker:** Helen Pinkney  
**Medium:** Linen, screenprint



**Title:** Flowers  
**Date:** c. 1932-1934  
**Primary Maker:** Helen Pinkney  
**Medium:** Linen, airbrush



**Title:** Puppets  
**Date:** c. 1932-1934  
**Primary Maker:** Helen Pinkney  
**Medium:** Cotton, screenprint



**Title:** Industrial Designs  
**Date:** c. 1932-1934  
**Primary Maker:** Helen Pinkney  
**Medium:** Cotton, airbrush



**Title:** Kimono with Sash  
**Date:** c. 1910's -1920's  
**Primary Maker:** Japanese  
**Medium:** Silk, embroidery



**Title:** Crewel Embroidered Bed Curtain  
**Date:** c. 1650-1675  
**Primary Maker:** English  
**Medium:** Linen/ cotton ground, wool embroidery



**Title:** Kimono  
**Date:** 1945-1950  
**Primary Maker:** Japanese  
**Medium:** Cotton and bast fiber, double Ikat



**Title:** Obi Sash with Ties  
**Primary Maker:** Japanese  
**Medium:** Yellow / gold brocade



**Title:** Pair of Zori  
**Primary Maker:** Japanese  
**Medium:** Wood sole



**Title:** Pair of Zori  
**Primary Maker:** Japanese  
**Medium:** Black vinyl



**Title:** Bustle  
**Primary Maker:** Japanese  
**Medium:** Silk



**Title: Sash**  
**Primary Maker: Japanese**  
**Medium: Silk**



**Title: Tie**  
**Primary Maker: Japanese**  
**Medium: Silk**



**Title: Tie**  
**Primary Maker: Japanese**  
**Medium: Silk**



**Title: Braid**  
**Primary Maker: Japanese**  
**Medium: Silk**



**Title: Head Scarf**  
**Date: 1980**  
**Primary Maker: Thai**  
**Medium: Cotton, embroidery**



**Title: Banquet Cloth**  
**Date: 1950**  
**Primary Maker: Italian**  
**Medium: Linen**



**Title: Napkin**  
**Date: 1950**  
**Primary Maker: Italian**  
**Medium: Linen**



**Title: Napkin**  
**Date: 1950**  
**Primary Maker: Italian**  
**Medium: Linen**



**Title: Napkin**  
**Date: 1950**  
**Primary Maker: Italian**  
**Medium: Linen**



**Title:** Napkin  
**Date:** 1950  
**Primary Maker:** Italian  
**Medium:** Linen



**Title:** Napkin  
**Date:** 1950  
**Primary Maker:** Italian  
**Medium:** Linen



**Title:** Napkin  
**Date:** 1950  
**Primary Maker:** Italian  
**Medium:** Linen



**Title:** Napkin  
**Date:** 1950  
**Primary Maker:** Italian  
**Medium:** Linen



**Title:** Napkin  
**Date:** 1950  
**Primary Maker:** Italian  
**Medium:** Linen



**Title:** Napkin  
**Date:** 1950  
**Primary Maker:** Italian  
**Medium:** Linen



**Title:** Napkin  
**Date:** 1950  
**Primary Maker:** Italian  
**Medium:** Linen



**Title:** Napkin  
**Date:** 1950  
**Primary Maker:** Italian  
**Medium:** Linen



**Title:** Napkin  
**Date:** 1950  
**Primary Maker:** Italian  
**Medium:** Linen





**Title:** Sari  
**Date:** c. 1950  
**Primary Maker:** Indian  
**Medium:** Silk, metallic thread



**Title:** Silk Blouse Fabric (Sari)  
**Date:** c. 1950  
**Primary Maker:** Indian  
**Medium:** Silk, metallic thread



**Title:** Saddle Throw  
**Date:** about 1880-1900  
**Primary Maker:** Diné (Navajo)  
**Medium:** Wool, cotton



**Title:** Phulkari  
**Date:** c. 1950  
**Primary Maker:** Punjab  
**Medium:** Cotton, silk floss



**Title:** Crazy Quilt  
**Primary Maker:** American  
**Medium:** Silk



**Title:** Napkin  
**Date:** 1950  
**Primary Maker:** American  
**Medium:** Linen with embroidery



**Title:** Napkin  
**Date:** 1950  
**Primary Maker:** American  
**Medium:** Linen with embroidery



**Title:** Napkin  
**Date:** 1950  
**Primary Maker:** American  
**Medium:** Linen with embroidery



**Title:** Napkin  
**Date:** 1950  
**Primary Maker:** American  
**Medium:** Linen with embroidery



**Title:** Napkin  
**Date:** 1950  
**Primary Maker:** American  
**Medium:** Linen with embroidery



**Title:** Napkin  
**Date:** 1950  
**Primary Maker:** American  
**Medium:** Linen with embroidery



**Title:** Napkin  
**Date:** 1950  
**Primary Maker:** American  
**Medium:** Linen with embroidery



**Title:** Napkin  
**Date:** 1950  
**Primary Maker:** American  
**Medium:** Linen with embroidery



**Title:** Napkin  
**Date:** 1950  
**Primary Maker:** American  
**Medium:** Linen with embroidery



**Title:** Napkin  
**Date:** 1950  
**Primary Maker:** American  
**Medium:** Linen with embroidery



**Title:** Napkin  
**Date:** 1950  
**Primary Maker:** American  
**Medium:** Linen with embroidery



**Title:** Tablecloth  
**Date:** c. 1930  
**Primary Maker:** Italian  
**Medium:** Linen



**Title:** Napkin  
**Date:** c. 1930  
**Primary Maker:** Italian  
**Medium:** Linen



**Title:** Napkin  
**Date:** c. 1930  
**Primary Maker:** Italian  
**Medium:** Linen



**Title:** Napkin  
**Date:** c. 1930  
**Primary Maker:** Italian  
**Medium:** Linen



**Title:** Napkin  
**Date:** c. 1930  
**Primary Maker:** Italian  
**Medium:** Linen



**Title:** Napkin  
**Date:** c. 1930  
**Primary Maker:** Italian  
**Medium:** Linen



**Title:** Napkin  
**Date:** c. 1930  
**Primary Maker:** Italian  
**Medium:** Linen



**Title:** Napkin  
**Date:** c. 1930  
**Primary Maker:** Italian  
**Medium:** Linen



**Title:** Napkin  
**Date:** c. 1930  
**Primary Maker:** Italian  
**Medium:** Linen



**Title:** Napkin  
**Date:** c. 1930  
**Primary Maker:** Italian  
**Medium:** Linen



**Title:** Napkin  
**Date:** c. 1930  
**Primary Maker:** Italian  
**Medium:** Linen



**Title:** Napkin  
**Date:** c. 1930  
**Primary Maker:** Italian  
**Medium:** Linen



**Title:** Napkin  
**Date:** c. 1930  
**Primary Maker:** Italian  
**Medium:** Linen



**Title:** Crazy Quilt  
**Date:** 1880s  
**Primary Maker:** American  
**Medium:** Cotton



**Title:** Quilt  
**Date:** 1860s  
**Primary Maker:** American  
**Medium:** Cotton



**Title:** Quilt  
**Date:** 1880s  
**Primary Maker:** American  
**Medium:** Cotton

**Title:** Blanket  
**Date:** 20th century  
**Primary Maker:** Mexican  
**Medium:** Wool, cotton



**Title:** Banner  
**Date:** Early 19th century  
**Primary Maker:** Chinese  
**Medium:** Silk



**Title:** Banner  
**Date:** Mid 19th century  
**Primary Maker:** Chinese  
**Medium:** Silk



**Title:** Celebratory/  
Ceremonial Ikat  
Hanging  
**Date:** c. 1960s  
**Primary Maker:** Cambodian  
**Medium:** Silk





**Title:** Textile Panel  
**Date:** c. 1960s  
**Primary Maker:** Guatemalan  
**Medium:** Cotton



**Title:** Textile Panel  
**Date:** c. 1960s  
**Primary Maker:** Guatemalan  
**Medium:** Cotton



**Title:** Batik  
**Date:** 1920  
**Primary Maker:** Herman Sachs  
**Medium:** Batik on silk



**Title:** Egyptian Revival Hanging  
**Date:** c. 1920s  
**Medium:** Cotton applique